

## Communication Port

# TR-50U2 Features and Specs

Communication with PC  
USB

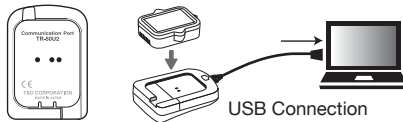
Communication with Loggers  
Optical Communication

The TR-50U2 is a communication port for making settings in and downloading data to PC from our loggers.

### Simple USB Connection to PC

Communication can be carried out by simply connecting to a PC and placing the logger face down on the TR-50U2. Compatible with some discontinued products.

Place logger on TR-50U2



|                          | TR-50U2   |
|--------------------------|---|
| Compatible Devices       | TR-5i Series: TR-51i / 52i /<br>TR-55i-TC / 55i-Pt / 55i-V / 55i-mA / 55i-P<br>TR-5S Series: TR-51S / 52S<br>TR-5 Series: TR-51A / 52 |
| Communication Interfaces | Between TR-50U2 - Data Logger(s):<br>Optical Communication<br>Between TR-50U2 - PC:<br>USB Communication                              |
| Communication Time       | TR-5i/5S Series: About 20 sec.<br>TR-5 Series: About 160 sec.   |
| Power                    | USB bus power   |
| Dimensions               | H 80 mm x W 56 mm x D 16.5 mm   |
| Weight                   | Approx. 25 g  |
| Operating Environment    | Temperature: -10 to 60 °C<br>Humidity: 90%RH or less ( no condensation )  |
| Accessories              | USB Mini-B Cable US-15C, Software CD-ROM,<br>User's Manual Set ( Warranty Included )  |

The specifications listed above are subject to change without notice.