

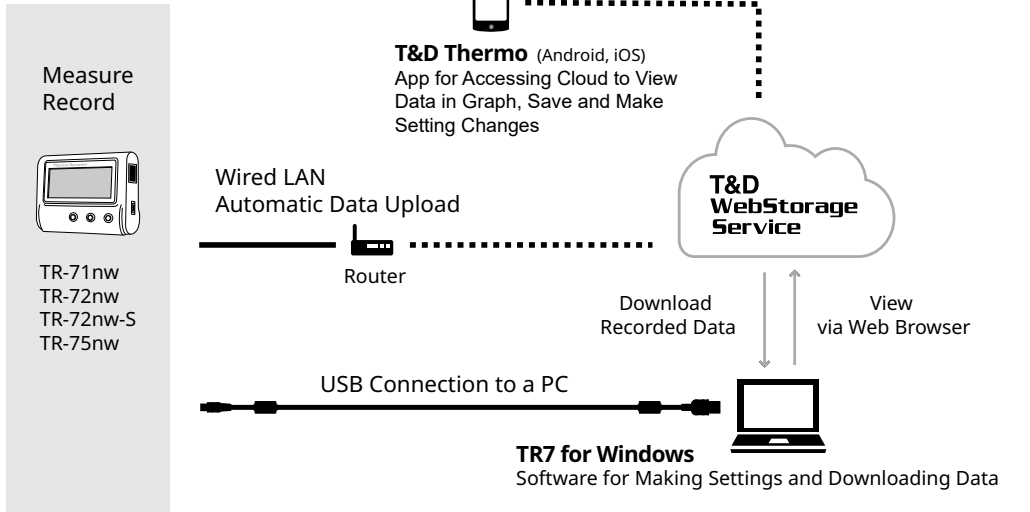
Thermo Recorder

TR-7nw Series User’s Manual

T&D Corporation

https://tandd.com/

2024.12 16504980029 (11th Edition) © Copyright T&D Corporation. All rights reserved.



In this document, TR-71nw, TR-72nw, TR-72nw-S and TR-75nw are collectively referred to as the “TR-7nw Series” or simply as the “device” or “logger”.

Recording Interval Setting

Install the batteries and sensor(s) in the logger, and make sure the LCD is displaying measurements. The factory default setting for the recording interval is 10 minutes for TR-75nw and 1 minute for TR-71nw/TR-72nw. Follow the procedure below to change this setting.

-
- Skip this setting if you don't need to change the recording interval.
 - Upon the start of recording, all previously recorded data in the logger will be deleted.
 - Note: When **REC** is ON (recording in progress), the logger cannot be turned off , nor can the recording interval be changed.

1. When **REC** is ON, press-and-hold the <REC/STOP> button until **REC** turns OFF (recording stops).
2. Press the <INTERVAL> button.
3. While **Rec.** is displayed, press-and-hold the <INTERVAL> button until the interval time flashes.

Details about the LCD Display

Other than the measurement display, the following is displayed on the LCD monitor.

	Web Internet Connection Status ON : Connected to the Internet. BLINKING : Unable to connect to the Internet. OFF : Auto-upload is set to “OFF”.
1 2	Displayed Measurement Channel
COM	LAN or USB Communication in Progress
REC	Recording Status ON: Recording in progress BLINKING: Waiting for programmed start OFF : Recording stopped
ENDLESS ONETIME	Recording Mode ENDLESS : Upon reaching the logging capacity of 8,000 readings, the oldest data is overwritten and recording continues. ONETIME : Upon reaching the logging capacity of 8,000 readings, [FULL] appears on the LCD display and recording automatically stops. * Cannot be set or changed using buttons on the logger. The factory default setting is “ENDLESS”
DATA	Amount of Recorded Data in Device
	Low Battery Level Please change the batteries as soon as you see this mark. If not, the device enters sleep mode [SLP] appears on LCD) and stops all operations. If the batteries are further left unchanged, all previously recorded data will be lost.
Upload.	Indicates Auto-upload Interval when using <INTERVAL> button
Rec.	Indicates Recording Interval when using <INTERVAL> button

T&D WebStorage Service

T&D WebStorage Service is a free cloud-based storage service provided by T&D Corporation, which enables you to access the uploaded recorded data from a web browser and check the current readings, remaining battery life of the device, and alert status. You can also receive warning notifications by email. In order to use the T&D WebStorage Service, user registration (free) and device registration are required.

- Important Notes
- Before registering as a user, please read [Service Details / License Agreement] for information on service contents and specifications, including the data storage period in the T&D WebStorage Service.
 - The registration code of the device can be found on the supplied Registration Code Label. If you lose the code label, install the software TR7 for Windows and connect your logger via USB to the computer. The registration code and device information will be displayed at the lower-left area of the screen.
 - When the storage period in T&D WebStorage Service is exceeded, old data will be deleted.

- User and Device Registration Procedures
1. Access T&D WebStorage Service from the web browser.
 2. Click [Create Account] to go to the registration page, and follow the directions to complete the registration.
 3. Login by entering the registered User ID and Password.
 4. Click [Devices] in the left menu to open the Device Settings window.
 5. Clicking the [+Device] button will take you to the Add a Device page.
 6. Enter the serial number and registration code for the device, then click [Add].

4. Press <INTERVAL> again to select the interval time. Each press changes the interval as follows:
Recording Intervals (Rec.) 1, 2, 5, 10, 15, 20, 30 sec / 1, 2, 5, 10, 15, 20, 30, 60 min
 5. When you stop pressing the button, the display will return to the normal measurement mode, confi rming that it is set.
 6. Start recording by pressing and holding the <REC/STOP> button until the **REC** mark appears in the display.

Below are some examples of recording intervals and maximum recording times.

1 sec.	30 sec.	5 min.	15 min.	60 min.
About 2 hours	About 2 days	About 27 days	About 83 days	About 333 days

Recording Intervals & Corresponding Maximum Length (in days) of Data Stored in T&D WebStorage Service

Recording Interval	1 sec.	2 sec.	5 sec.	10 sec.	15 sec.	20 sec.	30 sec.	1 min.	2 min.	5 min.	10 min.	15 min.	20 min.	30 min.	1 hr.
Maximum Length (in days)	1 day	2 days	3 days	6 days	9 days	12 days	20 days	40 days	80 days	200 days	450 days	450 days	450 days	450 days	450 days

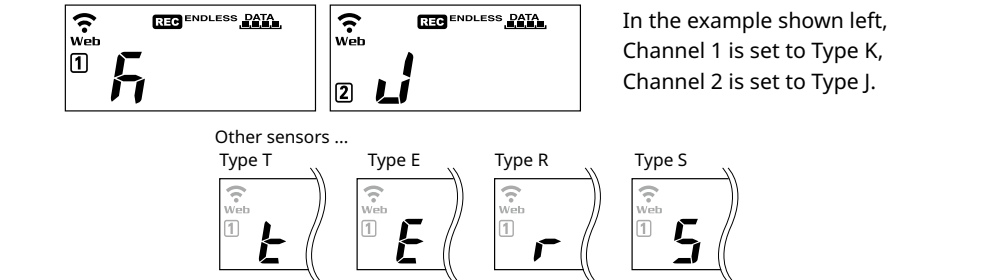
In order to stop a recording session, press and hold the <REC/STOP> button until the **REC** mark disappears from the display.

Messages on LCD Screen

	Sensor Error: No sensor connected, improper connection, damaged, etc.
	Full Data: Upon reaching capacity of 8,000 readings in "ONETIME" mode, this message appears and recording automatically stops.
	Sleep Mode: If you take no action after a battery warning mark appears and auto-upload stops, the logger will enter sleep mode and stop all operations to protect data. All operations are stopped to protect data in sleep mode. • If the logger remains in sleep mode over one week without a change of batteries, all recorded data will be lost.

Thermocouple Sensor Type (TR-75nw only)

By pressing and holding the <DISPLAY> button, you can see which sensor type is currently set for each channel as below.



The factory default setting is “K” for both **1 2**. Depending on the thermocouple type you’re going to use, make settings or changes using “T&D WebStorage Service” or the software “TR7 for Windows”.

Operations via Cloud

Auto-upload settings enable this product to automatically upload data to T&D WebStorage Service. Please read the T&D WebStorage Service License Agreement carefully before making settings. Making Auto-upload Settings indicates your acceptance of this Agreement.

STEP 1

Making Auto-Upload Settings

By making settings for auto-upload, it is possible to automatically upload recorded data to the online “T&D WebStorage Service”.

1. Connect a LAN cable to the Ethernet port.

If you wish to use a static IP address instead of DHCP, change the network settings on our software "TR7 for Windows" by connecting the device to a PC via USB. For details about operations please see the "Help" menu in the software.

2. Click the <INTERVAL> button twice to display the current upload interval.



3. Press the <INTERVAL> button until the display flashes.
 4. With each pressing of the <INTERVAL> button the upload interval time will change. When the desired interval appears, stop pressing the button.

If you wish NOT to use the auto-upload feature, select “OFF”. Within a few seconds, the display will return to measurement mode to indicate the upload interval is set.

Below are some examples of upload intervals and the corresponding estimated battery life.

In general, the shorter the upload interval, the shorter the battery life.

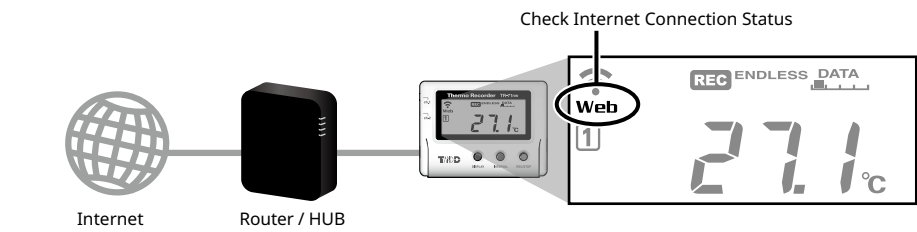
Upload Interval	1 min.	10 min.	1 hr.	12 hrs.
Battery Life	About 10 days	About 2 months	About 1 year	About 1.5 years

- All estimates are based on operations carried out with a new battery and are in no way a guarantee of actual battery life.
 - The auto-upload interval can also be changed during a recording session.

STEP 2

Installing the Device

Install the device to the actual place it will be used.



Checking Transmission and Connection Status

By pressing the <REC/STOP> button, recorded data will be sent to “T&D WebStorage Service”. If the transmission is successful, **Web** will still be ON even after communication is complete and **COM** turns OFF.

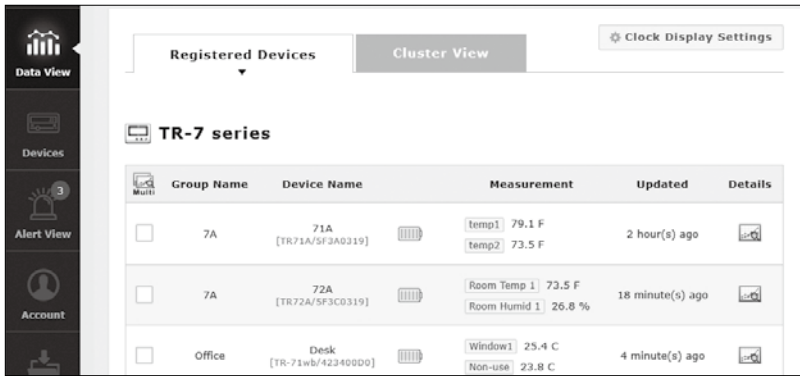
Web is ON : Internet connection is successfully established.
Web is blinking : Internet connection failed. Please check the network settings.
 is blinking upward : Data is being transmitted.

STEP 3

Checking Recorded Data

1. Access "T&D WebStorage Service" from the web browser on your PC or mobile device.
 2. Click [Create Account] to go to the registration page, and follow the directions to complete the registration. If you already have your User ID, go to the next step.
 3. Login by entering the registered User ID and Password.
 4. In the [Device Settings] window click [+Device].
 5. In the Add a Device page, enter necessary information and click [Add].
- The registration code can be found on the supplied Registration Code Label.

6. After data is sent to "T&D WebStorage Service" either by auto-upload or by pressing the <REC/STOP> button on the logger, the added device and its measurements will appear in the [Data View] window.



If measurements are not displayed:

- Check the device screen to make sure **REC** is ON. Recorded data will not be uploaded when recording is not in progress.
 - Try sending data to "T&D WebStorage Service" again by pressing the <REC/STOP> button on the device.
 - See "Checking Connection Status" in step 2, and check if the device has a LAN connection.

If the display of measurements is not refreshed:

We recommend making the recording interval shorter than the auto-upload interval. If the recording interval is set to longer than the upload interval, the same measurement is displayed until the next recording occurs and the new data is uploaded.

If you cannot find the registration code:

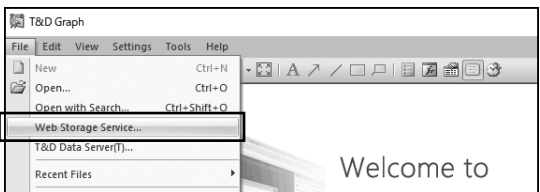
See [T&D WebStorage Service] - [important Notes] on the left side of this paper.

Viewing Data from other than a Web Browser

Recorded data sent to "T&D WebStorage Service" can be accessed, viewed and downloaded directly from "T&D Thermo" and "T&D Graph" as well as from a web browser.

Here explains how to view data from "T&D Graph". For information about "T&D Thermo", see [Operations via Mobile APP] on the back of this manual.

1. Download and install the software T&D Graph from T&D Website.
<https://tandd.com/software/td-graph.html>
 2. From the [File] Menu, select [Web Storage Service].



3. Enter the User ID and Password registered with T&D WebStorage Service, and click [Login].
Upon successful login, the recorded data of the devices registered with your account will be displayed.
 4. Double click on the recorded data you wish to view in a graph.
The data will be downloaded and displayed in a graph.

STEP 4

Changing the Settings

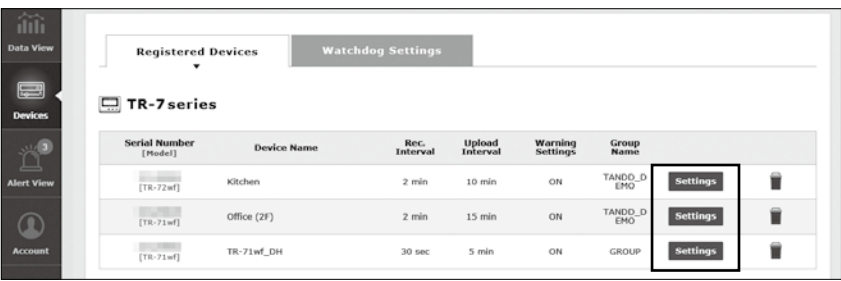
By using the “T&D WebStorage Service”, it is possible to change the following settings.

Device Information:

Device Name, Group Name, Recording Interval, Recording Mode, Auto-upload Interval, Channel Name, Time Settings, Temperature Unit

Warning Settings:

Lower Limit, Upper Limit, Sensor Warning, Judgement Time, Battery Warning



The changes in settings will be applied when the device communicates with the "T&D WebStorage Service". To apply the changes immediately, press the <REC/STOP> button on the device after settings are completed.

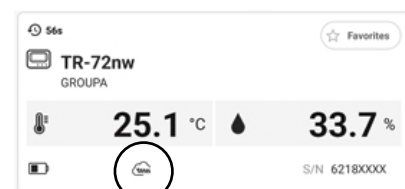
Operations via Mobile APP

STEP 1 "T&D Thermo" App Settings

1. Install "T&D Thermo" to your smartphone or tablet.
"T&D Thermo" is available on the Apple Store for iOS devices and the Google Play Store for Android devices.
2. Search for "T&D Thermo" on the Apple Store for iOS devices and the Google Play Store for Android devices.
3. Open "T&D Thermo".
4. Tap the menu icon in the upper left corner of the screen, and tap [App Settings].
5. Tap [Account Management] for T&D WebStorage Service.
6. Enter the User ID and Password for your account, and tap [Apply].
If you added more than one account, select the account you want to access.
7. Tap to return to the top screen.

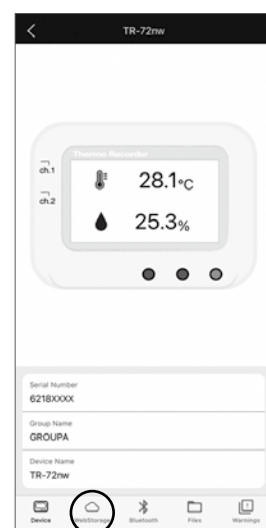
STEP 2 Graph Display and Device Settings

1. From the list on the top screen, tap the device registered with T&D WebStorage Service to open the Device Info screen.



The [WSS] icon will appear for devices registered to the cloud.

2. Tap [WebStorage] at the bottom of the screen.
This will access the logger via T&D WebStorage Service and open the Graph/Device Settings screen.



Access to Cloud



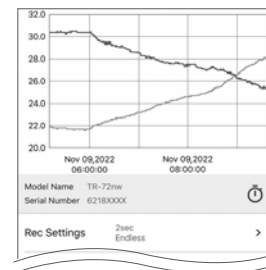
Graph/Device Settings screen

Graph Operations

Zooming in and out	Pinch in/out to change the scale.
Full screen display	Hold the smartphone horizontally.
Checking time and temperature at the specified point	Tap and hold on the graph (in full-screen mode).

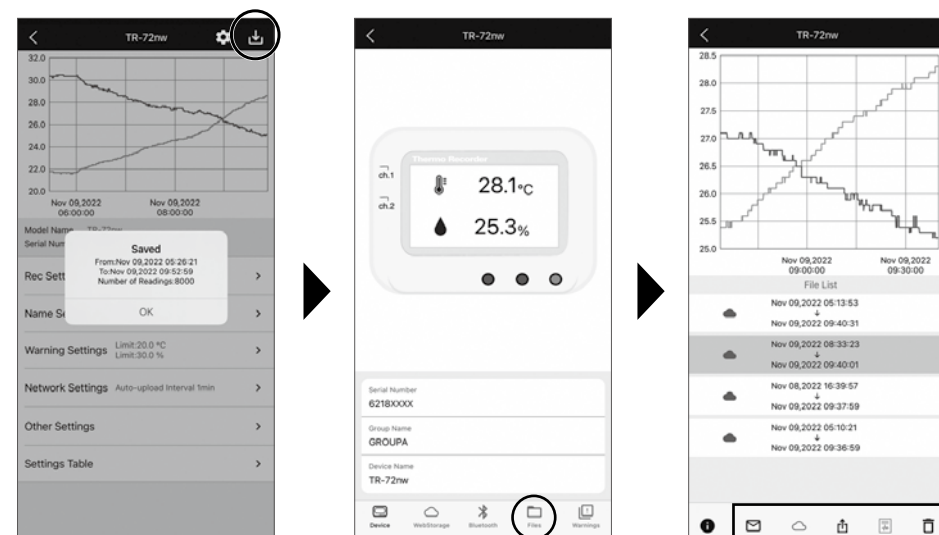
Device Settings

You can view or make changes to the settings such as Rec Settings, Name Settings, Warning Settings and Auto-upload Interval.
Changed settings will be applied the next time the device connects to the T&D WebStorage Service.



The icon indicates that there are pending settings.

STEP 3 Saving and Sharing Recorded Data



Graph/Device Settings screen

Device Info screen

File List

1. To save the recorded data to your device, tap in the upper right corner of the Graph/Device Settings screen.
2. Tap [Files] at the bottom of the Device Info screen to open the file list.
3. Select a file and tap the desired icon at the bottom of the screen.

For details about T&D Thermo, refer to the online help.
<https://tanadd.com/support/webhelp/tdthermo/>



Operations via USB

It is possible to make device settings and download recorded data by using the software "TR7 for Windows". Data downloaded can then be viewed in a graph for analysis by using our software "T&D Graph".

Primary features of "TR7 for Windows" include:

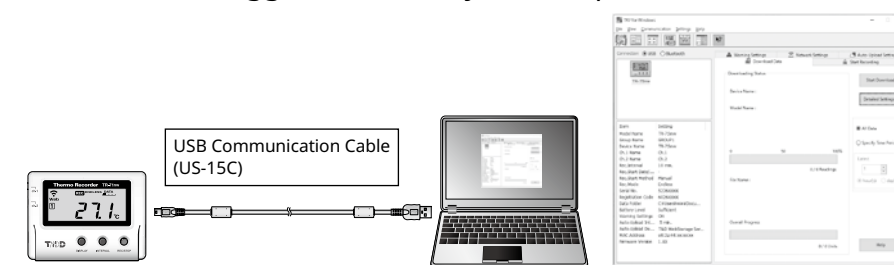
- Start/Stop Recording
- Auto-upload Setting
- Network Settings (static IP address, etc.)
- Name Settings (device/group/channel)
- Downloading and Saving Recorded Data
- Warning Settings
- Time Settings
- Sensor Type Setting (TR-75nw only)
- Report Creation and Output
- Settings and Log Output
- Reset to Factory Default Settings

STEP 1 Setting Up

1. Download and install the software "TR7 for Windows" and "T&D Graph" from T&D Website.

<https://tanadd.com/software/tr7forwin.html>
<https://tanadd.com/software/td-graph.html>

2. Connect the logger via USB to your computer.



- "TR7 for Windows" will open automatically. (If not, please open it manually from the Windows Start Menu or Start Screen.)
- For details about operations please see the "Help" menu in the software.

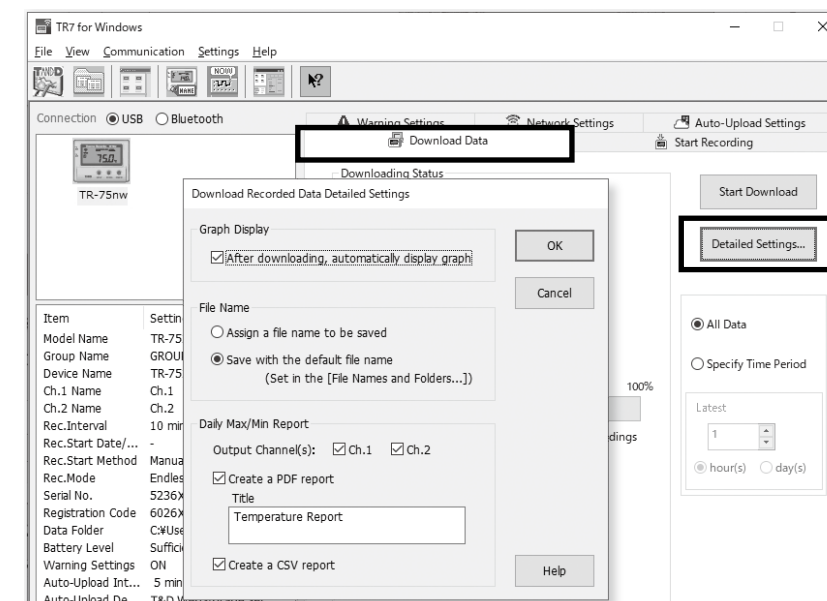
3. After the setup is complete, place the device to the desired measurement location.

STEP 2 Downloading Recorded Data

1. Connect the logger via USB to your computer.
2. Open "TR7 for Windows", click the [Download Recorded Data] tab and proceed with the download.

[Detailed Settings] allow you to:

- View and change the "Graph Display" and "File Name" settings
- Select whether to create a report (PDF/CSV) with daily maximum and minimum values and total time out of threshold, etc.

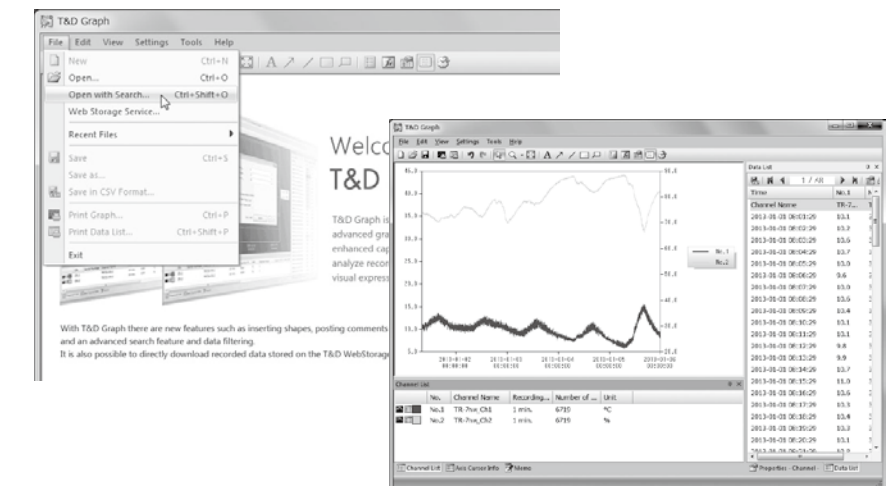


For details about the operations of TR7 for Windows, refer to
https://cdn.tanadd.co.jp/glb/html_help/tr7win-help-eng/



STEP 3 Viewing Recorded Data in Graph

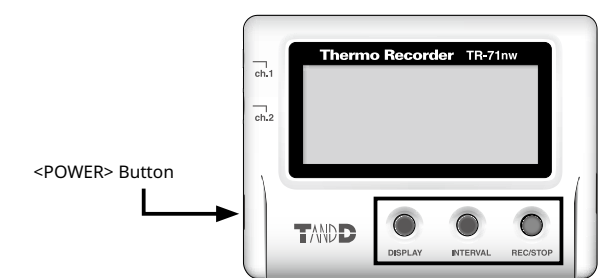
Open "T&D Graph" and then access the data you wish to view.
Upon completion of the download, "T&D Graph" will open and display the graph.



For details about the operations of T&D Graph, refer to
https://cdn.tanadd.co.jp/glb/html_help/tdgraph-help-eng/



Device Button Operations



Power ON/OFF	Press-and-hold*1 the <PWR> button.
Start*2 / Stop Recording	Press-and-hold the <REC/STOP> button.
Check Recording Interval / Upload Interval	Press the <INTERVAL> button. With each pressing of the button, the display will switch between the recording interval (Rec.) and the upload interval (Upload).
Recording Interval Setting	Press the <INTERVAL> button. While Rec. is displayed, press-and-hold*3 the <INTERVAL> button until the interval time flashes. Press <INTERVAL> again to select the interval time.
Upload Interval Setting	Press the <INTERVAL> button twice. While Upload is displayed, press-and-hold the <INTERVAL> button until the interval time flashes. Press <INTERVAL> again to select the interval time.
Transmit Data and Settings to T&D WebStorage Service	Press the <REC/STOP> button.
Cancel Communication	Press the <PWR> button.
Channel on Display (Fixed or Alternating Display)	Press the <DISPLAY> button to switch the display: Ch1 (fixed) → Ch2 (fixed) → Ch1&2 (alternate)
TR-75nw Sensor Type	Press-and-hold the <DISPLAY> button.

*1."Press-and-hold" means to hold the button down for about two seconds. During recording, the power cannot be turned off.

*2.Upon the start of recording, all previously recorded data in the unit will be deleted.

*3.Recording Interval setting cannot be changed while a recording session is in progress.

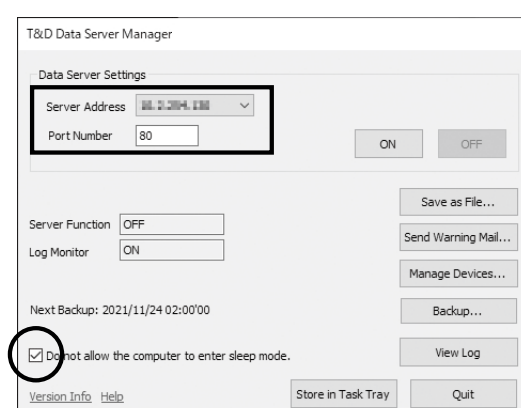
Before performing button operations, please read the attached document [Please Read First] and install the batteries and sensor(s) in the logger, and make sure the LCD is displaying measurements.

T&D Data Server

"T&D Data Server" is a Windows software that receives and stores data recorded by TR-7nw Series data loggers to the server's database. It is possible to monitor current readings and warnings via a web browser. When you wish to have recorded data automatically uploaded to your server rather than T&D WebStorage Service, please use "T&D Data Server".

<https://tanadd.com/software/td-data-server.html>

1. Install T&D Data Server on the computer to be used as a server, and open the [T&D Data Server Manager] window.
2. Enter the Server Address and Port Number.



- The IP address(es) for the server PC will automatically appear. If there are multiple networks, select the IP address for the network waiting for a connection.
- The default Port Number is 80.
- The settings cannot be changed while the server function is running. Please click the [OFF] button to stop the server function.

3. Place a check next to "Do not allow the computer to enter sleep mode."

4. Click the [ON] button.

- If Windows goes in "Standby" or "Sleep" mode, reception of recorded data and monitoring can not be carried out.
- The IP address and port number set here will be used in the Windows software "TR7 for Windows" as the data destination in the Auto-upload Settings. For details about operations of "TR7 for Windows", please refer to the software's Help.

Monitoring

To open the monitoring window, open your web browser, and in the address bar enter the server address set in Data Server Settings.

Graph View

In the monitoring window, click the desired device name to view the data in graph form.

For details about the operations of T&D Data Server, refer to
https://cdn.tanadd.co.jp/glb/html_help/tddataserver-help-eng/

