



Data Collector

RTR-500DC

Introductory Manual

Thank you for purchasing our product.

This manual explains in brief how to get an RTR-500DC Unit ready for use and how to install the software.

Details about how to use the software "RTR-500DC for Windows" and its functions can be found in the software "Operation Guide (Help)".



Important Notices and Disclaimers

In order to properly use this product, please carefully read this manual before using.

- All rights of this Manual belong to T&D Corporation.
- It is prohibited to use, duplicate and/or arrange a part or whole of this manual without the permission of T&D Corporation.
- Microsoft® and Windows® are registered trademarks of Microsoft Corporation USA and are binding in the USA, Japan and all other countries.
- All registered trademarks, company names, product names and logos mentioned herein or for products being used are the properties of T&D Corporation or of their respective owners.
- Specifications, design and other contents outlined in this manual are subject to change without notice.
- Please follow the safety precautions outlined in the manual carefully.
- We cannot guarantee nor are we responsible for safety if this product is used in any manner other than was intended.
- On-screen messages in this document may vary slightly from the actual messages.
- Please notify the shop where you purchased this product or T&D Corporation of any mistakes, errors or unclear explanations in this manual.
- T&D Corporation accepts no responsibility for any damage or loss of income caused by the use of our product.
- This product has been designed for private and/or industrial use only. It is not for use in situations where strict safety precautions are necessary such as in connection with medical equipment, whether directly or indirectly.
- We are not responsible for any malfunction or trouble caused by the use of our product or by any problem caused by the use of measurement results of our product. Please be fully aware of this before using our product.
- This Manual cannot be reissued, so please keep it in a safe place.
- Please read the warranty and provisions for free repair carefully.

Software User's Agreement





Disclaimers

- Although T&D Corporation has made operational tests on our software "RTR-500DC for Windows", we cannot guarantee that all operations will work properly under all conditions.
- T&D Corporation shall not accept any responsibility for any damage whether direct or indirect that results from the usage of "RTR-500DC for Windows".
- Specifications of "RTR-500DC for Windows" may be subject to change and service may be terminated without advance notice to the user. In such a case T&D Corporation shall not be responsible for any damages whether direct or indirect from the inability to use "RTR-500DC for Windows".
- T&D Corporation has no obligation to correct any defects found in "RTR-500DC for Windows".

Copyright

- The Copyright for RTR-500DC for Windows, including the program and relevant documents, belongs solely to T&D Corporation.
- The reprinting or redistribution for commercial purposes whether in part or in whole, in magazines or as a part of any product is strictly forbidden without the expressed consent of T&D Corporation. Any inquires concerning commercial redistribution should be directed to the Sales Department of T&D Corporation.
- Please do not attempt to make any changes or modifications to RTR-500DC for Windows.

Table of Contents



Introduction	Carrying out Registration, Settings, and Operation
Introductory Manual-----1	Process of Making Registrations and Settings-30
Important Notices and Disclaimers-----2	1. Make Settings for Base Units -----30
Software User's Agreement -----3	2. Register Data Loggers as Remote Units -----30
Table of Contents -----5	3. Register Repeaters (when necessary) -----30
Table of Contents -----5	4. Check Wireless Signal Strength and Make Wireless
Safety Precautions and Instructions -----6	Route Settings-----31
Explanation of Symbols -----6	Launcher Window and Applications -----32
What is "RTR-500DC"? -----12	How to Open -----32
Outline-----12	Communication between RTR-500DC and PC -33
Features of Wireless Communication Function -----12	Operations which require RTR-500DC ↔ PC
Features of the RTR-500DC -----13	Communication -----33
Before Using this Product-----14	Communication between Remote Unit / Repeater
What are "Base Units", "Remote Units" and	and PC -----34
"Repeaters"? -----14	Operations which require Remote Unit / Repeater ↔ PC
Basic Procedures -----16	Communication -----34
	Wireless Communication between RTR-500DC
Getting Ready	and Remote Unit -----35
Package Contents -----18	Operations which require RTR-500DC ↔ Remote Unit
Connect the Antenna -----18	Wireless Communication -----35
Appearance Diagram and Part Names -----19	Operating Remote Units via Multiple RTR-500DC Units - 35
Install the Battery -----20	How to Register the Same Remote Unit to Multiple
Other Power Sources Available for Use -----20	RTR-500DC Units -----35
Battery Replacement -----20	Optical and Cable Communication between RTR-
Sleep Mode -----20	500DC and Remote Units -----36
Power and Auto Power Off Function -----21	Operations which require RTR-500DC ↔ Remote Unit
Turning ON the Power -----21	Optical and Cable Communication -----36
Turning OFF the Power -----21	Optical Communication: RTR-501/502/503/505/507S- 36
Auto Power Off Function -----21	Cable Communication: RTR-574 / 576 -----36
Operations via Buttons and Operation Dial -----22	
Using the Operation Dial -----22	Communication Functions
Button Functions -----22	Downloading Data by Group -----38
About the Icons and Abbreviations -----23	Wireless Communication: [ WL Gather Data] -----38
Installing the Software -----24	Reading Judgement Results in the "Gathering Result"
Before Installing the Software: -----24	Window -----40
Installing the USB Device Driver -----27	Downloading Data from a selected Remote Unit -41
	Wireless Communication: [ WL Gather Data] -----41
	Optical / Cable Communication: [ Gather Data] - 42
	Monitoring -----43
	Gather Current Readings and Current Status of Remote
	Unit : [ WL Monitor Mode] -----43
	Communication Conditions for Monitoring -----44
	Viewing a Monitoring Window -----45

Safety Precautions and Instructions




The following items should be strictly obeyed for the safe usage of this Unit, and for protecting yourself and other people from bodily harm and/or damage to property. Before using this product, please read the following carefully and fully understand the contents.

Explanation of Symbols

Explanation of Warning Symbols

 DANGER	These entries are actions that absolutely under no circumstance should be taken. The taking of such an action may cause serious personal physical damage or death.
 CAUTION	These entries are actions that if taken may lead to physical injury or damage to persons or things.

Explanation of Picture Symbols

	Denotes an important warning or caution.
	Denotes a forbidden action.
	Denotes an action that must be taken.

DANGER



When installing and using this Unit, make sure to follow all warnings and directions from your computer manufacturer.



Do not take apart, repair or modify the Unit.
Doing so may cause fire or electrocution.



If water or a foreign body enters the Unit, immediately disconnect cables, remove batteries, and stop using.
Continued use may cause fire or electrocution.



Do not use this Unit in wet or humid places, such as a bathroom.
Doing so may cause fire, electrocution, and/or malfunction.



Store the Unit and Accessories out of the reach of children.
Not doing so may result in unexpected accidents and injury from playing with or swallowing parts.



Do not connect any communication cables connected to the Unit to telephone line outlets.
Continued use may cause fire or electrocution.



If any smoke or strange smells are emitted from the Unit, immediately disconnect the power and communication cables.
Continued use may cause fire or electrocution.



Do not drop or expose the Unit to a strong impact. If that happens to the Unit, immediately disconnect the power and communication cables and stop using.
Continued use may cause fire or electrocution.



Make sure to periodically remove dust and dirt from the AC adaptor plug.
When performing maintenance please make sure to disconnect the plug from the outlet.
If dust is allowed to accumulate on the plug, moisture may cause poor insulation and result in fire.



Do not remove the battery or unplug the AC adaptor with wet hands.
This may cause electrocution.

CAUTION



Please note that this Introductory Manual has been written based on the presupposition that details about set-up of any necessary equipment to enable network connection have already been taken care of by the user and that connection has been confirmed as workable.

T&D Corporation shall not be responsible for any damages which a contractor, a user or a third party may suffer, whether direct or indirect, due to the inability to communicate or use communication devices.



Further, T&D is not responsible for any damage, malfunction or trouble, whether direct or indirect, caused by the use of our products.



This Unit has been designed for private and/or industrial use only. It is not for use in situations where strict safety precautions are necessary such as in connection with medical equipment, whether directly or indirectly.



Harmful gases or chemicals may cause corrosion and/or other danger to the Unit. Also, coming in contact with hazardous substances, may cause harm to people handling the Unit. Therefore, do not use or store the Unit in any environment that is exposed to chemicals and/or harmful gases.



This Unit is not waterproof.
If the Unit gets dirty, wipe it with a clean cloth.



Do not store, leave, or use the Unit in any place exposed to direct sunlight, high temperature, extremely low temperatures, or high humidity. This may cause deformation to both the outside casing and the inside. It may also cause condensation on the inside of the Unit leading to fire or electrocution.



Battery terminals may provide insufficient contact due to age or vibration. This may lead to data loss.



Battery terminals may provide insufficient contact due to age or vibration. This may lead to data loss.
Battery life varies depending upon the type of battery, the measuring environment, frequency of communication, ambient temperature in which it is used, and battery performance.



If the Unit is not to be used for a long period of time, for safety reasons please remove the battery.
Leaving batteries inside the Unit may cause battery leakage and malfunction.



Do not use an AC adaptor other than one that is specified for use with the Unit. Doing so may cause fire or malfunction.



Please do not insert fingers or foreign objects into cable connection jacks.



Make sure that all cable plugs are inserted fully, so as not to cause an improper connection. Also, when unplugging cables from the Unit, do not pull the cord, but hold the connector to disconnect.



Do not cut or process the cords for the AC adaptor or the communication cables. Also, do not twist, pull on or swing any of the cords.



To prevent damage to the Unit from static electricity, remove static electricity from your body by touching metal around you (door knob, window frame) before touching the Unit.

Static electricity may cause not only damage to the Unit, but may cause breaks in or a loss of data.



Do not disconnect the communication cable during wireless communication or USB communication.

Doing so may cause adverse effects to the Unit and/or PC.



We shall not guarantee the Unit's operation if it has been connected to a PC using a USB hub or a USB extension cable.



Do not use or store the Unit in the following places.

Doing so may cause electrocution, fire and/or other adverse effects to the Unit and/or other surrounding devices.

- Areas exposed to direct sunlight

This will cause the inside of the Unit to become overheated and may cause fire, deformation, and/or other damage including malfunction.

- Areas exposed to strong magnetic fields

This may cause damage including malfunction.

- Areas exposed to water leakage

This may cause electrocution or other damage including malfunction.

- Areas exposed to static electricity.

This may cause damage including malfunction.

- Areas exposed to excessive vibration

This may cause injury, malfunction, damage or loss of proper electrical contact.

- Areas that are not flat or level

This may cause the Unit to fall and result in injury and/or damage.

- Areas near fire or exposed to excessive heat

This may cause damage including malfunction and deformation.

- Areas exposed to excessive dust, dirt and smoke

This may cause damage including malfunction.



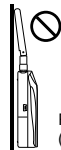
Notes and Precautions for Installing Wireless Communication Devices

When installing wireless communication devices take special care in selecting locations so as to ensure proper communication.

Note that even after a successful installation, due to changes in environmental conditions, communication errors may occur when restarting the system.

As far as possible, try to keep wireless communication devices away from metals and set them up in high unobstructed positions.

- Please take note that in many instances, walls, floors, stairs, fences and desks will contain metals. In order to carry out communication between indoor and outdoor units, please locate indoor units near a window so that radio waves can be easily transmitted.
- Please install these devices more than 30cm away from walls or boards containing metal.
- If wireless communication units are placed in a metal container such as a freezer or refrigerator, the possible wireless communication range will be shortened. In most cases radio waves are transmitted via doors and door openings so place devices as near to doors as possible.



Repeater
(RTR-500)

Place so that the antenna is
away from objects or walls.

As far as possible, keep the devices away from noise-emitting sources.

- Equipment such as some industrial instruments, electronic devices or fluorescent lamps generate noise. Please place Units more than 1 meter away from such devices.
- Please place Units more than 1 meter away from computers and other devices which emit noise.
- Keep all wires as far away from wireless communication devices as possible. Please be careful about placing near any wiring or cables such as power supply cables, telephone wires or LAN cables.

Objects which contain lots of water, such as plants or soil, absorb radio waves. We highly recommend that such materials should not be placed between or near wireless communication Units.

- When measuring temperature in a greenhouse it has been reported that as plants grew, communication errors also increased.
- Do not place Units directly on the ground.

Do not place devices which are using the same communication frequency channel in the same area.

- If the same channel is used for multiple devices not only will more communication errors occur, but battery life will also be shortened.
- If there is a possibility that devices with the same frequency channel will be in wireless communication at the same time, please make sure to make changes to the frequency channels so they are not the same.

After having made an installation, check the wireless signal strength.

Checking from the software:

The supplied software application includes a feature to check for wireless signal strength. In the RTR-500DC Settings Utility, in the [Wireless Route Settings] menu it is possible to check signal strength.

Checking from the RTR-500DC:

In the Main Menu of the RTR-500DC, open [Monitor Mode] - [Specify Remote Unit]; check the signal strength by looking at the antenna icons displayed in the monitoring window.



Compliance Information

CE Statement

The RTR-500 Series products are in compliance with the Radio Equipment Directive 2014/53/EU.

The following standards have been applied:

<Safety and Health>	EN 60950-1 EN 50663
<EMC>	EN 301 489-1 EN 301 489-3
<Radio Spectrum>	EN 300 220-2 (receiver category 2)

The full text of the EU declaration of conformity is available at the following internet address:

http://cdn.tandd.co.jp/glb/manual/DoC_RTR500_Series.pdf



Important Notice

Wireless products cannot be used in countries other than where those products have been approved for use, according to that country's wireless regulations.

T&D Corporation shall in no manner whatsoever take responsibility for the usage of these products, nor be liable in any manner for legal consequences stemming from the usage of these wireless products in unapproved areas.

What is "RTR-500DC"?

Outline

The RTR-500DC is a user-friendly wireless communication Data Collector designed for hand-held portability. Without having to manually gather the data loggers, it is possible, via wireless communication, to collect data from data loggers that have been registered as Remote Units.

The data can then be easily displayed in graph form in the LCD display of the Data Collector enabling the immediate on-the-spot checking of data.

The RTR-500DC is compatible with any wireless Data Loggers in our RTR-500 Series.

Compatible Data Loggers

RTR-501 / 502 / 503 / 505 / 507S / 574 / 576

* RTR-505 is a collective name for RTR-505-TC, 505-Pt, 505-V, 505-mA, and 505-P.

Features of Wireless Communication Function

Downloading Data via Wireless Communication

The wireless communication range between a Data Logger and an RTR-500DC is about 150 meters (500 ft). It is possible to download data from Data Loggers without having to handle them. Moreover, by setting up a Repeater, it is possible to extend the wireless communication range.

Monitoring / Warning Monitoring Function

Using the monitoring function, the RTR-500DC carries out wireless communication at a set interval with the registered Data Loggers (Remote Units) to monitor Current Readings and Remote Unit Status. If a warning occurs in a Remote Unit for which the monitoring function is active, users will be notified by "beeping" sound.

Registering up to 224 Data Loggers to one RTR-500DC

Up to 224 Data Loggers can be registered into one RTR-500DC. Data Logger registration is carried out in Groups, each is assigned a frequency channel for communication. Groups can be made and registered to match your purpose: by location, by item and so on.

Operating Remote Units via Multiple RTR-500DC Units

Not only can one RTR-500DC unit be set up to manage a large number of Remote Units, but multiple RTR-500DC units can be used to communicate, via wireless communication, with one Remote Unit. The same Remote Unit can be registered to multiple Base Units (RTR-500DC), either by using the software "RTR-500DC for Windows" and copying the Base Unit registration information

into a multiple number of Base Units, or by using the "Visitor Entry" function by having the Base Unit read the Remote Unit info directly without using the software. In this way it is not necessary to repeat the Remote Unit registration process.

Starting and Stopping Recording

It is possible to set to start and stop recording for a Data Logger from the RTR-500DC.

Features of the RTR-500DC

Graph Display of Recorded Data on High Quality LCD

It is possible to view the data collected from Data Loggers in graph form on the RTR-500DC LCD. Here you can check whether a set Upper / Lower Limit has been exceeded or not, as well as, the highest and lowest readings.

Holds up to 15 Remote Units at Full Storage Capacity

When downloading units at non-full storage capacity, it can store and manage up to 250 downloading sessions.

Easy One-Hand Operation

The handy Operation Dial makes the operation of the RTR-500DC simple; moving the dial up and down displays the various menu selections which can be easily selected by pressing in on the dial.

Data Backup Function

When battery power becomes low, the Unit will automatically go into sleep mode in order to protect the data. After going into sleep mode, the Unit can retain recorded data for about a month.

Various Power Supplies and Energy Saving Function

It is possible to supply power to the RTR-500DC from any of the following: AAA alkaline batteries, AAA Ni-MH batteries, USB bus power, or AC adaptor (optional). The energy saving function will automatically turn off the Unit to save battery power if the Unit is not used for about three minutes.

Firmware Update Function

The firmware can be easily updated by connecting the target RTR-500DC with a USB communication cable to the computer. As newly compatible devices are released, firmware updates will be periodically released to support these changes. For more about how to update firmware and the latest update information, visit our T&D website (<http://www.tandd.com/>).

Before Using this Product

What are "Base Units", "Remote Units" and "Repeaters"?

The following terms are used throughout this Manual. The definitions of the terms are as follows:

Base Unit

This term is used to refer to any RTR-500DC unit that has been set up as Base Unit. A Base Unit collects current RTR readings and data measured by and recorded in Remote Units via wireless communication as well as carries out monitoring.

Remote Unit

This term is used to refer to any RTR-500 Series Data Logger that has been registered as a Remote Unit. A Remote Unit measures and records various items such as temperature, humidity and so on. The wireless communication range between a Remote Unit and a Base Unit, if unobstructed and direct, is about 150 meters (500 ft).

RTR-501 / 502 : Temperature

RTR-503 / 507S : Temperature and Humidity

RTR-574 : Illuminance, UV Intensity, Temperature, and Humidity

RTR-576 : CO2 Concentration, Temperature, and Humidity

RTR-505 *

RTR-505-TC / 505-Pt --- Temperature (Thermocouple / Pt100, Pt1000)

RTR-505-V ----- Voltage

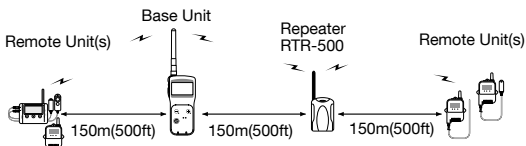
RTR-505-mA ----- 4-20mA

RTR-505-P ----- Pulse

* RTR-505-TC, 505-Pt, 505-V, 505-mA, and 505-P are collectively referred to as the "RTR-505".

Repeater

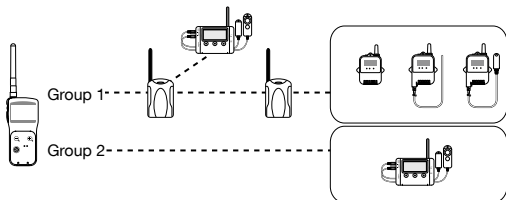
This term is used to refer to any RTR-500 unit that has been registered as a Repeater. If wireless communication cannot successfully be carried out due to obstacles, or if you wish to extend the wireless communication range, please add Repeater(s) between Remote Unit(s) and the Base Unit.



By registering and making settings with the dedicated software "RTR-500DC for Windows" it is possible to create a system whereby wireless communication will be possible between the registered Base Units, Remote Units, and Repeaters.

About Groups

When registering Remote Units and Repeaters to a Base Unit, it is helpful to organize and register them in Groups depending on location, purpose or either criteria. Each Group can then be assigned a communication frequency channel. Remote Units and Repeaters cannot be registered to more than one Group.



About Number of Possible Registrations

Number of Groups : Up to 7 Groups per RTR-500DC Unit

Number of Remote Units: Up to 32 units per Group (16 units for RTR-505 / 574 / 576)

Number of Repeaters: Up to 15 units per Group

- Even if the number of Groups is reduced, the maximum number of Remote Units / Repeaters per Group does not change.
- Even if the number of Remote Units / Repeaters is reduced, the maximum number of Groups per RTR-500DC unit does not change.

Basic Procedures

The following shows the basic flow of procedures.

Getting Ready

1. Check the Base Unit

Check the Package Contents and Inspect the Unit

Check the Basic Operations

- Install the Battery
- Operations via Buttons and Operation Dial
- About the Icons and Abbreviations

2. Install the software "RTR-500DC for Windows"

Precautions before Installation and Installation Procedure

Software Operating Environment

3. Install the USB Device Driver

Installation Procedure

Check the USB Device Drivers for Base Units, Remote Units and Repeaters

4. Get Ready the Remote Units and Repeaters (where necessary)

Follow directions in the User's Manual that accompanies the Remote Unit or Repeater.

Notes about Operation

Check the Communication Methods

- Communication between RTR-500DC and PC
- Communication between Remote Unit / Repeater and PC
- Communication between RTR-500DC and Remote Unit

Registering Devices and Making Settings (using "RTR-500DC for Windows")

Opening Applications and Checking the Menu

Checking the Process of Making Registrations and Settings

- For details including info about the settings window, please see the "Operation Guide" in the software or the "Help" menu in the Settings Utility.

Using RTR-500DC Functions

- Communication Functions between the RTR-500DC and the Remote Unit (Monitoring, Downloading Data, etc.)
- Viewing Functions (Graph, Data List, etc.)

Getting Ready

This section explains what needs to be done before registrations and settings can be made.

Package Contents

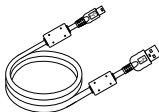
Check the contents of the package.



RTR-500DC x1



Antenna x 1



USB Mini-B Cable
x 1



AAA Alkaline Battery
(LR03) x 2



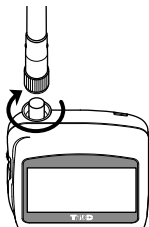
Software
CD-ROM x1



Introductory Manual
(Warranty) x 1

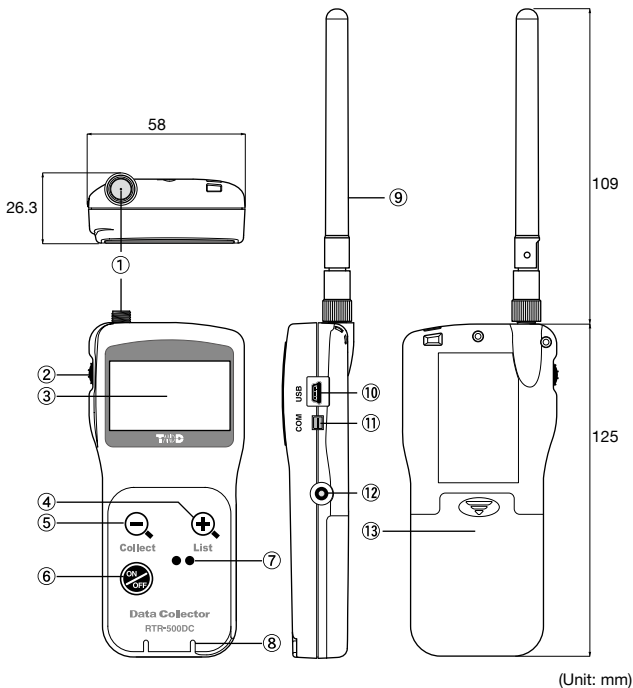
Connect the Antenna

Connect the supplied antenna to the antenna connector.



Make sure to install the software before connecting an RTR-500DC to a PC with the USB cable.

Appearance Diagram and Part Names



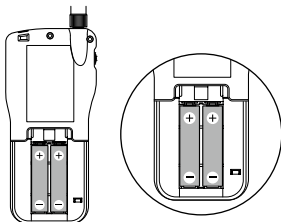
- ① Antenna Connector
- ② Operation Dial
- ③ LCD Display
- ④ <List> Button
- ⑤ <Collect> Button
- ⑥ <Power> Button
- ⑦ Optical Communication Area
- ⑧ Slitted Area

- ⑨ Antenna
- ⑩ USB Communication Cable Jack
- ⑪ RS-232C Communication Cable Jack
- ⑫ AC Adaptor Jack
- ⑬ Battery Cover

From hereafter in this manual, the RTR-500DC will be referred to as the "Unit".

Install the Battery

Remove the battery cover from the back of the Unit, and insert two AAA alkaline batteries.



- Make sure to use the new and same kind of batteries.
- Make sure that + and - are in the correct direction.
- The RTR-500DC cannot recharge batteries.
- Do not insert or change batteries with wet hands.

Other Power Sources Available for Use

AAA Ni-MH Batteries


AC Adaptor AD-06C1 (sold separately)

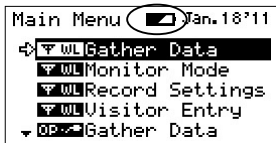
USB Bus Power

Battery Replacement



If the Unit is left without a battery or battery power is lost for more than 5 minutes, all recorded data may be erased.

When battery power becomes low, a battery life warning mark [] will appear in the Unit's LCD display. When this mark appears, try to replace the batteries with new ones as soon as possible.



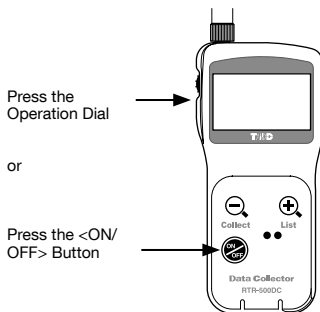
Sleep Mode

If the batteries are not changed and power becomes even lower, the Unit will automatically go into sleep mode in order to save data. In sleep mode, the Unit cannot be turned on or operated as usual.

Power and Auto Power Off Function

Turning ON the Power

Press the <ON/OFF> button or the Operation Dial to turn on the power.



Turning OFF the Power

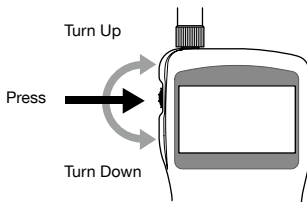
Press the <ON/OFF> button. Turning off the power cannot be carried out from the Operation Dial.

Auto Power Off Function

If the Unit is not used for about three minutes, it will automatically turn off to save battery power.

Operations via Buttons and Operation Dial

Using the Operation Dial



Turn: Choose Menu and List / Change Numerical Values

- By moving the dial up and down, the arrow(cursor) will move to allow you to choose the desired item.
- When setting a numerical value, by moving the dial up the value will become larger, and by moving the dial down the value will become smaller.

Press: OK / Cancel

- By pushing in on the dial, you can make a desired menu selection and complete or activate a setting.
- Pressing during a download session or searching will cancel the operation.
- Pressing while viewing a graph or checking data details will cancel the operation and return to the Main Menu.

Press and Hold: Change the Display

- By pressing and holding the dial while viewing a graph display, you can change the channel on display.

Button Functions



Collect

<Collect> Button

- Press this to download via wireless communication.
- Press to open the window where you can choose the Group for communication.
- Press while the entire graph is on display to move cursor to the lowest or highest value.
- Press to return the enlarged-graph to its original size.



List

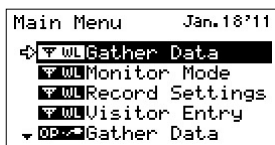
<List> Button

- Press to open the Data List Display.
- Press while viewing the Data List to view details for the data on display.
- Press while the entire graph is on display (x1) to zoom in on the image.

About the Icons and Abbreviations

The following contains some brief general explanations about icons and abbreviations.

Main Menu Window



Menus for Wireless Communication



Menus for Optical or Cable Communication



An item marked with an arrow denotes it has been selected.
Turn the dial to move the arrow.
By pressing the dial, the selected item will be activated.



These icons may appear on the left side of the Menu and List Display.
They indicate that there are more menu or list items above or below for view;
you can scroll the display by moving the dial up and down.



[Back]

Move the arrow to [Back] and push the dial to return to the previous window.

Execute

Move the arrow to [Execute] and push the dial to carry out the operation.

RU

Remote Unit(s)

VRU

Visitor Remote Unit(s)

Rpt

Repeater(s)

COMM

Communication
Example: [COMM Error]

Installing the Software



Make sure to install the software before connecting the Unit to a PC with a USB cable.

If you have connected a Unit to your computer before installing the USB device driver, make sure to click the [Cancel] button in the Wizard window when it pops up on the computer display. Then disconnect the USB cable from the Unit.

Before Installing the Software:

Is Windows operating properly?

If Windows is not operating properly, the software may not be installed correctly or it may not operate properly.

Make sure to check that the OS you are running and "RTR-500DC for Windows" are compatible.

Microsoft Windows 10 32 / 64 bit

Microsoft Windows 8 32 / 64 bit

Microsoft Windows 7 32 / 64 bit

- For details about the necessary operating environment, see page 83.

Quit all open applications.

If you are running other applications, make sure to quit them before installation.

If you have any permanently active software, such as a virus check or scan program in your computer, make sure to also quit them.

To install "RTR-500DC for Windows", it is necessary to have Administrator rights (Computer Administrator) for the computer in which you wish to install it.

RTR-500DC for Windows Installation Procedure

1. Start Windows and login using a User Account with Administrator (Computer Administration) rights.
2. Place the CD-ROM into your CD or DVD drive.
3. The [Install Program] window will appear.

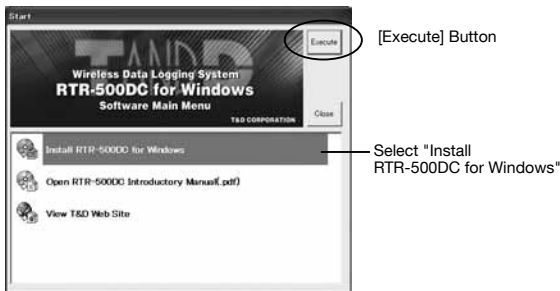
If the [Auto Play] window appears:

Click on [Run start.exe].

If the [Install Program] window does not appear automatically:

Click on the [start.exe] icon in the CD/DVD drive.

4. Select "Install RTR-500DC for Windows" and click the [Execute] button to start the installation.



5. Follow the directions as they appear to complete the installation.

If a window appears such as the one below during installation, choose [Install].



6. After installation, “RTR-500DC for Windows” will appear in the Windows Start Screen or Start Menu.

Installing the USB Device Driver



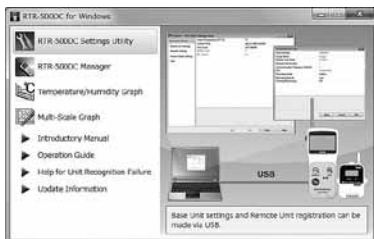
Have you already installed the supplied software?

Before connecting a Unit to a PC with a USB cable make sure to install the supplied software first.

If the Base Unit is not an RTR-500DC, please follow directions for installing the USB Device Drivers found in the Introductory Manual that came with the Base Unit you are using.

1. Open the “RTR-500DC for Windows” from the Start Screen or Start Menu.

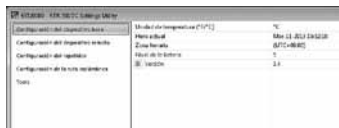
Launcher Window



3. Connect the Unit with the supplied USB cable to your computer. The USB driver installation will start automatically.

- Do not connect a Unit to your computer until the software has been installed.

4. After the USB driver installation is completed, the factory default settings will be displayed automatically in the settings window.



Carrying out Registration, Settings, and Operation

This section explains a few items that need to be checked before carrying out registration and settings for the Base Units, Remote Units, and Repeaters via the software, and before starting operation.

Process of Making Registrations and Settings

This section briefly explains the procedure for carrying out registration of devices and the making of settings. For details about viewing the settings window and how to make settings, please refer to the "RTR-500DC for Windows" Operation Guide.

1. Make Settings for Base Units

1. Connect the Base Unit with a USB cable to your computer.
 2. Open the RTR-500DC Settings Utility.
 3. Open the [Base Unit Settings] Menu to make necessary settings.
- Do not connect more than one RTR-500DC to your computer at one time.

Base Unit Registration Items

Unit of Temperature* / Clock / Time-Zone

* Unit of temperature to be used in the Remote Unit recorded data and in the display of the Remote Unit.

2. Register Data Loggers as Remote Units

1. In the RTR-500DC Settings Utility, open the [Remote Unit Settings] Menu.
2. Click the [Register] button.
3. When the direction appears in the application window, set up the RTR-500DC and the Remote Unit to enable communication and carry out registration.

Remote Unit Registration Items

Group Name / Remote Unit Name / Frequency Channel / Recording Mode /
Recording Interval / Warning Monitoring Settings

3. Register Repeaters (when necessary)

Repeaters can be registered to help increase range and improve wireless communication.

1. In the RTR-500DC Settings Utility, open the [Repeater Settings] Menu.
2. Click the [Register] button.
3. When the direction appears in the application window, set up the Repeater to enable communication and carry out registration.

Repeater Registration Items

Group Name / Frequency Channel

4. Check Wireless Signal Strength and Make Wireless Route Settings

After all registrations and settings have been completed, place the Remote Units and Repeaters in their actual positions, check wireless signal strength and make wireless route settings.

1. In the RTR-500DC Settings Utility, open the [Wireless Route Settings] Menu.
2. Click on the [Test Signal] button to check the signal strength.
3. Make wireless route settings.

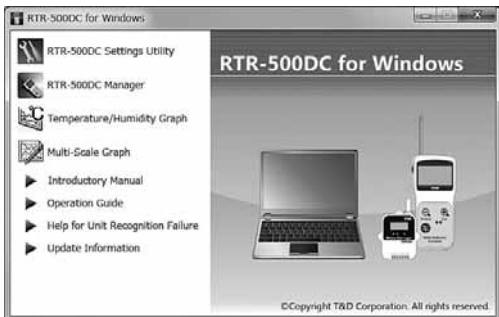
- For details about viewing the signal strength and how to make wireless route settings, please refer to the Operation Guide.

Launcher Window and Applications

How to Open

Open the “RTR-500DC for Windows” from the Start Screen or Start Menu.

Launcher Window



RTR-500DC Settings Utility	Use this application to register and make settings for Base Units, Remote Units, and Repeaters.
RTR-500DC Manager	Use this application to download recorded data from a Base Unit to a PC.
Temperature / Humidity Graph	Use this application to view recorded data for RTR-501 / 502 / 503 / 505 / 507S.
Multi-scale Graph	Use this application to view recorded data for RTR-505 / 574 / 576.
Introductory Manual	This document is available in PDF file format.
Operation Guide	Open this for detailed information about operations, including easy-to-understand descriptions with screenshots and/or illustrations, as well as frequently asked questions (FAQs).
Help for Unit Recognition Failure	Click here for information on how to check and install the USB driver.
Update Information	Click here for Information about software and firmware updates.

Communication between RTR-500DC and PC

Operations which require RTR-500DC ↔ PC Communication

Base Unit Settings, Settings Changes, Initialization, etc.

Downloading Recorded Data from RTR-500DC to PC

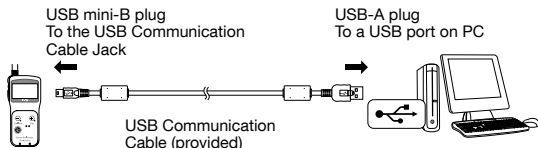


Have you already completed installing "RTR-500DC for Windows" and the USB device drivers?



Do not connect more than one RTR-500DC at a time to the PC.

Connect the RTR-500DC with the supplied USB communication cable to your PC to carry out communication.



- Make sure that the cable is inserted fully, so as not to cause an improper connection.

If the screen does not change after connecting the device, the USB driver may not have been installed correctly. Please see [Help for Unit Recognition Failure] and check the USB driver.

Communication between Remote Unit / Repeater and PC

Operations which require Remote Unit / Repeater ↔ PC Communication

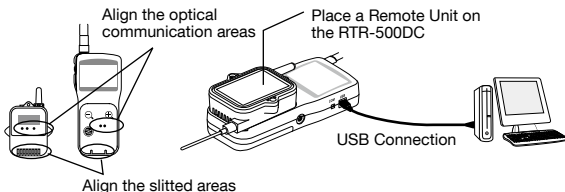
Remote Unit / Repeater Registration, Settings Changes, Initialization, etc.



Have you already completed installing "RTR-500DC for Windows" and the USB Device Drivers?

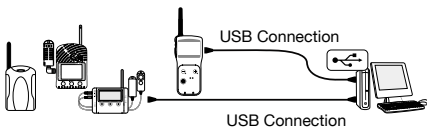
For RTR-501 / 502 / 503 / 505 / 507S

Place a Remote Unit face down on the Base Unit connected to the PC to carry out communication.



For RTR-574 / 576 and RTR-500

Connect the RTR-500DC with the supplied USB communication cable to your PC to carry out communication.



- Make sure that the cable is inserted fully, so as not to cause an improper connection.
- Do not connect two or more of the same device to your PC at one time.

If the screen does not change after connecting the device, the USB driver may not have been installed correctly. Please see [Help for Unit Recognition Failure] and check the USB driver.

Wireless Communication between RTR-500DC and Remote Unit

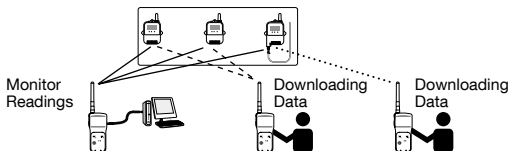
Operations which require RTR-500DC ↔ Remote Unit Wireless Communication

Opening the [WL] Menu in the RTR-500DC

Wireless communication can be carried out between RTR-500DC and the Data Loggers that have been registered and set as Remote Units by using "RTR-500DC for Windows".

Operating Remote Units via Multiple RTR-500DC Units

By registering the same Remote Unit to a number of RTR-500DC Units, it is possible to gather the Remote Unit info as well as download recorded data via wireless communication with any of the above RTR-500DC.



How to Register the Same Remote Unit to Multiple RTR-500DC Units

Set up a number of Base Units with the same registration contents including Repeaters

After saving the Base Unit info to the PC by using "RTR-500DC for Windows", transmit the collected contents of the file to a different RTR-500DC Unit.

- Open the RTR-500DC Settings Utility - [Tool] Menu - [Save Base Unit info]/ [Send Registration Contents to Base Unit]. (See the application's Help Menu for the details.)

Register Remote Units which have been registered in other Base Units

Register Remote Units for "Visitor Entry"

- In the Main Menu, open [WL Visitor Entry] - [Accept Visitor RU] - [Join VRU]. (See the page 51 for details.)

Optical and Cable Communication between RTR-500DC and Remote Units

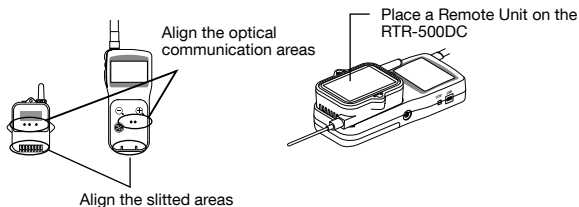
Operations which require RTR-500DC ↔ Remote Unit Optical and Cable Communication

Opening the [] Menu in the RTR-500DC

This enables the user to download recorded data from Remote Units via methods other than wireless communication. The communication method will depend upon the type of Remote Unit.

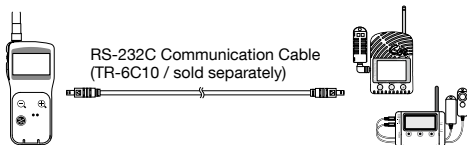
Optical Communication: RTR-501 / 502 / 503 / 505 / 507S

Place a Remote Unit face down on the RTR-500DC to carry out communication.



Cable Communication: RTR-574 / 576

Use an optional RS-232C serial communication cable (TR-6C10) to connect the RTR-500DC and the Remote Unit.



Communication Functions

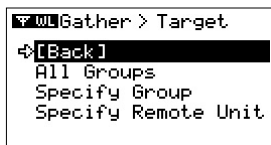
This section explains a few important communication functions and operations between the RTR-500DC and Remote Units that can be carried out from the RTR-500DC.

Downloading Data by Group

Wireless Communication:[WL Gather Data]

The RTR-500DC Base Unit can download recorded data from up to 128 Remote Units at one time.

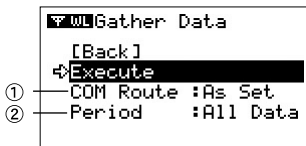
1. In the Main Menu, open [WL Gather Data].
2. Select the Target for downloading.



[All Groups]: Download from all registered groups

[Specify Group]: Download from only the specified group

3. Select the Download Mode in the [Execute] window.



① [COM Route] : Select route of communication

[Direct] : Communicate directly without Repeaters

[As Set]: Communicate according to Wireless Route Settings.

As the RTR-500DC is a hand held portable Base Unit, it is recommended to set to [Direct] so as to shorten communication time.

The above selection of communication route applies for communication with groups registered via the RTR-500DC Settings Utility. When communication is carried out with any group which has been registered for "Visitor Entry", always select [Direct].

* For details about "Visitor Entry", see page 51.

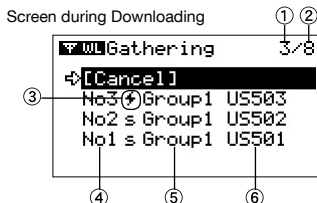
② [Period] : Period for Download Settings

[1 hour] to [47 hours] (in units of 1 hour)

[2 days] to [300 days] (in units of 1 day)

[All Data] : All of the data stored in the Remote Unit will be downloaded.

4. Adjust the arrow to [Execute] and press the Operation Dial to search for Remote Unit and start the downloading.



① **Number of Remote Units for which download is in progress or completed**

② **Total number of Remote Units**

The LCD screen as shown above means that recorded data is being (or has been) downloaded from three out of eight Remote Units for which wireless communication is being carried out.

③ **Downloading status icon**

If [↔] is blinking a data downloading session is in progress.

④ **List No.**

This shows the number assigned automatically in the order that the data was downloaded.

⑤ **Group Name**

This shows the Group Name entered when Remote Unit Registration was carried out.

⑥ **Remote Unit Name**

This shows the Remote Unit Name entered when Remote Unit Registration was carried out.

- Move the arrow to [Cancel] and press the Operation Dial during a download session to cancel the operation.
- Upon completion of 250 downloading sessions, the RTR-500DC will stop downloading and display the judgement result. (See page 40 for details.)
- If there is not enough memory left in the RTR-500DC for the data stored in the Remote Unit, the RTR-500DC will skip it and go to the next Remote Unit to download data. Only Remote Units whose stored data does not exceed the available memory capacity in the RTR-500DC can be the target of downloading.

Reading Judgement Results in the “Gathering Result” Window

The judgement result will be displayed automatically upon completion of the downloading.



If the RTR-500DC has stopped downloading data upon completion of 250 downloading sessions, [Gather Rec.Limit] will appear on the LCD display.

Icons for Judgement Results

- [s]: Downloading succeeded. No data exceeds the set upper and lower limits.
- [f]: Downloading failed.
- [mf]: Download could not be carried out due to insufficient memory (Memory Full)
- [↑]: The set upper limit has been exceeded.
- [↓]: The set lower limit has been exceeded.
- [±]: The set upper and lower limits have been exceeded.

Shortcut for the Graph Display

Select a Remote Unit Name from the list, and press the <List> button to view the graph.

- Data with such icons as [f] and [mf] cannot be viewed in graph form.

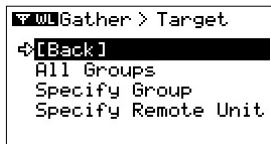
Changing the Group Name on Display

By selecting a Remote Unit Name from the list and pressing the Operation Dial, the Group Name will disappear and only the Remote Unit Name will be displayed. If you press and hold while downloading recorded data or viewing a screen during downloading, you can change the Group Name on display.

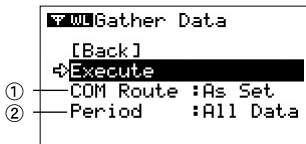
Downloading Data from a selected Remote Unit

Wireless Communication:[WL Gather Data]

1. In the Main Menu, open [WL Gather Data].
2. Open [Specify Remote Unit] and then select the Group and Remote Unit from which you wish to download data.



3. Select the Download Mode in the [Execute] window.



① [COM Route] : Select route of communication

[Direct] : Communicate directly without Repeaters

[As Set]: Communicate according to Wireless Route Settings.

As the RTR-500DC is a hand held portable Base Unit, it is recommended to set to [Direct] so as to shorten communication time.

② [Period] : Period for Download Settings

[1 hour] to [47hours]: in units of 1 hour

[2 Days] to [300Days]: in units of 1 day

[All Data]: all of the data stored in the Remote Unit will be downloaded.

4. Adjust the arrow to [Execute] and press the Operation Dial to search for Remote Unit and start the downloading.

Pressing the Operation Dial during a download session or while searching for a Remote Unit will cancel the operation.

Optical / Cable Communication: [Gather Data]

1. Set up the RTR-500DC and the Remote Unit to enable communication.

See page 36 for details.

2. In the Main Menu, open [OP Gather Data] to start the downloading.

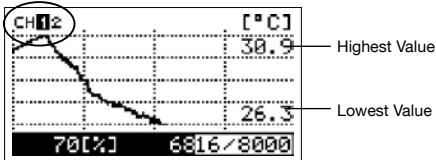
Pressing the Operation Dial during a download session will cancel the operation.

Screen during Downloading

As data is being downloaded, a changing graph and the high and low values for the received data will be continually shown.

If you press and hold down the Operation Dial while downloading recorded data you can change the channel on display.

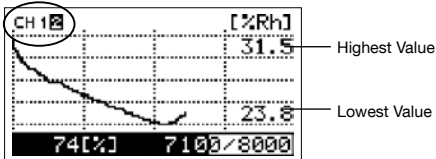
Ch.1



Press/hold the Operation Dial while Downloading to change channels.



Ch.2



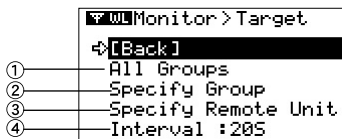
Monitoring

Gather Current Readings and Current Status of Remote Unit : [WL Monitor Mode]

The RTR-500DC Base Unit can be set up to communicate with the registered Remote Units, via wireless communication at the set interval, to gather current readings and current status of Remote Units.

- While using the Monitoring Function, the Auto Power Off Function will be disabled.

1. In the Main Menu, select [WL Monitor Mode].
2. In the [Target] window, select and set the monitoring range and interval.



① [All Groups]

Remote Units in all groups registered to the RTR-500DC will be monitored, and current readings and current status for those units will be displayed consecutively every 2 seconds. Pressing the dial will start the communication (search).

② [Specify Group]

All Remote Units in the selected groups will be monitored, and current readings and current status for those units will be displayed consecutively every 2 seconds. Pressing the dial will display the [Choose a Group] window. Select and set the group to start the communication (search).

③ [Specify Remote Unit]

The selected Remote Units will be monitored. Pressing the dial will display in the following order: [Choose a Group] - [Choose a RU]. Select and set the Remote Unit to start the communication (search).

④ [Interval] (Monitoring Interval)

[10S] to [59 S]: in units of 1 second

[1M] to [60 M]: in units of 1 minute

Pressing the Operation Dial during a monitoring session or while searching for a Remote Unit will cancel the operation.

Communication Conditions for Monitoring

The maximum number of Remote Units that can be monitored simultaneously is 128.

Notes about Monitoring Interval and Communication Time

If the wireless communication for monitoring takes longer than the set interval, the next monitoring session will be carried out without wait time.

Selecting [All Groups] or [Specify Group] when Repeaters have been registered

RTR-500DC for Windows automatically tries both communication without Repeater(s) and communication via Repeater(s) as registered.

When communication is carried out via Repeater(s), the RTR-500DC displays the Repeater icon(*1) in the monitoring window.

If the Repeater icon is displayed, the antenna(*2) shown in the same window will not necessarily indicate the signal strength in the registered communication route.

Selecting [Specify Remote Unit] when Repeaters have been registered

RTR-500DC carries out communication as registered.

It is possible to check for wireless signal strength in the registered route by the antenna(*2) shown in the monitoring window.

* 1: See page 45-47 (12) for details.

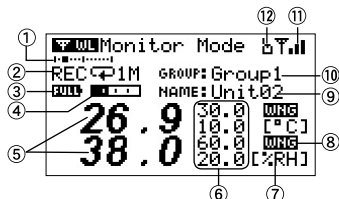
* 2: See page 45-47 (11) for details.

Viewing a Monitoring Window

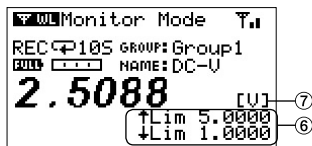
When monitoring is carried out by group, the display time for each window is about 2 seconds. A four-channel data logger RTR-574 displays Illuminance and UV Intensity in one window, and Temperature and Humidity in another. A three-channel data logger RTR-576 displays CO₂ Concentration in one window, and Temperature and Humidity in another.

Window for RTR-501 / 502 / 503 / 505 / 507S

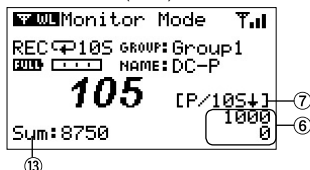
EX: RTR-503 (Temperature and Humidity)



EX: RTR-505-V (Voltage)

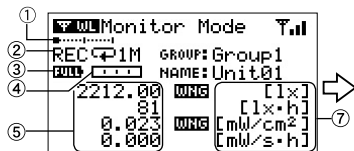


EX: RTR-505-P (Pulse)

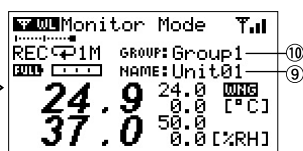


Windows for RTR-574 / 576

EX: RTR-574 (Illuminance and UV Intensity)



EX: RTR-574 (Temperature and Humidity)



① Remote Unit on Display

The horizontal axis shows the total number of Remote Units that are currently being monitored. This does not appear when monitoring only one Remote Unit. When the total number of Remote Units is 10, for example, the axis shows the 1st Remote Unit in the left end and the 10th Unit in the right end. A black spot on the horizontal axis shows the currently displayed Remote Unit. If the spot appears in the middle of the axis, it means the 5th Remote Unit is currently displayed.

② Recording Status

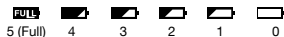
[REC]: Recording in Progress / [STP]: Recording Stopped / [PRG]: Programmed and Waiting

Recording Mode (↺ Endless / |→| Onetime)

Recording Interval (S: seconds / M: minutes)

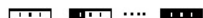
③ Battery Level

The battery level for the Remote Unit will be shown in 6 stages. When the battery level is below stage "2", wireless communication errors may occur more frequently such as failure to download recorded data.



④ The Amount of Recorded Readings in the Remote Unit

The estimated number of recorded readings stored in the Remote Unit is shown in a scale here. When the Remote Unit reaches its storage capacity, the scale becomes a full black bar.



⑤ Current Readings

For Illuminance and UV Intensity data from RTR-574, cumulative measurements can also be viewed.

⑥ Upper and Lower Limit Settings

These show the current Upper and Lower Limit Settings in the Remote Unit. The display position may differ depending on the Remote Unit being used. Nothing appears if Upper and Lower Limits have not been set with the Remote Unit.

⑦ Unit of Measurement

Temperature: °C , °F / Humidity: %RH / Illuminance: lx, klx
Cumulative Illuminance lxh, klxh, Mlxh , UV Intensity : mW/cm²
Cumulative Amount of UV Light (*1) : mW/cm²h, W/cm²h
CO2 Concentration : ppm
Voltage : V
4-20mA : mA
Pulse (*2) : Pulse ↑ (Rising), Pulse ↓ (Falling)

* 1: For the Cumulative Amount of UV Light, “cm²” is abbreviated to “s” in the monitoring window.([mW/s·h])

* 2: Pulse count is shown as [P / Recording Interval and rising or falling symbol], indicating the pulse count during a set recording interval. ([P/10S↓]: Number of falling pulses at 10 second interval)

⑧ Warning Judgement (Warning:Warning)

This appears if and when a measurement has been judged to qualify as a warning. Nothing appears if Upper and Lower Limits have not been set with the Remote Unit.

⑨ Remote Unit Name

This shows the Remote Unit Name entered when Remote Unit Registration was carried out.

⑩ Group Name

This shows the Group Name entered when Remote Unit Registration was carried out.

⑪ Antenna (Signal Strength)

The number of bars shows the signal strength for communication between the Base Unit and the Remote Unit. Having more bars means better communication status.



⑫ Repeater Icon

This appears when communication is carried out via Repeater(s) as registered. This does not appear when communication is carried out without Repeater(s).

⑬ Total Pulse Count

When using an RTR-505-P (Pulse) this shows the cumulative number of pulses.

Warning Monitoring

In the process of monitoring, the RTR-500DC will monitor for warnings. When receiving information that a warning has occurred in a Remote Unit, a warning buzzer will sound.

Target Remote Units for Warning Monitoring

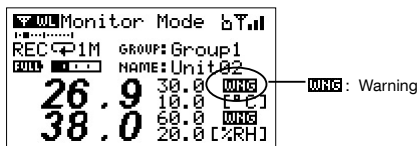
Warning Monitoring will be carried out only for those Remote Units which have been set to have warning monitoring ON in the Remote Unit Settings of the RTR-500DC Settings Utility. Remote Units which have been set to OFF will only have their current readings gathered.

Warning Conditions

A warning will be judged according to the Judgement Time and Upper / Lower Limits settings for each measurement item, which have been made in the RTR-500DC Settings Utility. If the Upper or Lower Limit is exceeded for the set length of time, a warning will be judged to have occurred.

Warning Buzzer

If a warning occurs in a Remote Unit that is being monitored, the buzzer in the RTR-500DC will emit a "beeping" sound.



About the Timing for Starting Warning Monitoring

If warning monitoring is started for a Remote Unit in which a warning is already occurring, neither the Warning Judgement Icon or Warning Buzzer will be activated.

When the cause of the warning returns to normal and the warning stops in the Remote Unit, the Warning Monitoring Function for that unit will be enabled.

Erasing the Warning Judgement Icon

Once the Warning Judgement Icon appears in the display, it will remain on even after the warning stops in the Remote Unit. If you wish to erase the icon, stop monitoring by pressing the Operation Dial and reset the monitoring in the [Target] window.

Starting / Stopping Remote Unit Recording



Upon the start of recording, all recorded data stored in the Remote Unit will be deleted.

Wireless Communication: [WL Record Settings]

Follow the directions below to make settings to Start / Stop Recording for one specified Remote Unit.

1. In the Main Menu, open [WL Record Settings].
2. Select [Start Recording] or [Stop Recording] Remote Unit Recording.
3. Select the Group and Remote Unit.
4. When you wish to start recording, make settings for the recording start mode and select [Execute] to search for the Remote Units which are available for communication.

- Pressing the Operation Dial during transmission will cancel the operation.

Record Settings window for starting recording



① [Start]

[Programmed]: Recording will begin on the set date and time.

[Immediate]: Recording will begin immediately.

② [Interval] and Recording Mode

The current Recording Interval and the icon for the Recording Mode Settings in the Remote Unit will appear here.

③ Programmed Recording Start Time

If you have selected [Programmed], make settings for the recording start time.

④ Current Time

If you wish to start recording in multiple Remote Units at the same time, make settings from the [Remote Unit Settings] Menu in the RTR-500DC Settings Utility. For details, see the Help Menu in the Application.

Optical / Cable Communication: [Record Settings]

1. Set up the RTR-500DC and the Remote Unit to enable communication.
See page 36 for details.
2. In the Main Menu, open [OP Record Settings] to make necessary settings to start recording.



- ① **[Start]**
[Programmed]: Recording will begin on the set date and time.
[Immediate]: Recording will begin immediately.
 - ② **[Interval] and Recording Mode**
The current Recording Interval and the icon for the Recording Mode Settings in the Remote Unit will appear here.
 - ③ **Programmed Recording Start Time**
If you have selected [Programmed], make settings for the recording start time.
 - ④ **Current Time**
3. Adjust the arrow to [Execute] and press the Operation Dial to communicate with the Remote Unit.

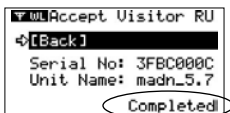
Registering and Unregistering Remote Units for "Visitor Entry"

[WL Visitor Entry]

This function allows for non-regular wireless communication between an RTR-500DC and Remote Units which have been registered in RTR-500 Series Base Units.

Up to 42 Remote Units can be assigned "Visitor Entry" status.

1. In the Main Menu, open [WL Visitor Entry].
2. To assign "Visitor Entry" status to a Remote Unit, place the target Remote Unit face down on the RTR-500DC connected to the PC, and select [Accept Visitor RU].
3. A [Completed] message will appear with the Serial No. and Unit Name* of the Remote Unit which has been assigned "Visitor Entry" status.



* This shows the Remote Unit Name entered when Remote Unit Registration was carried out.

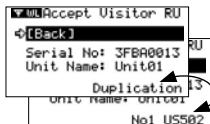
4. To release "Visitor Entry" status, select [Release One] and choose

Registration Error Messages



[Unregistered]

This message appears when communication is carried out between the RTR-500DC and a Data Logger which is in its original factory default settings or has been re-initialized by using the RTR-500DC Settings Utility.



[Duplication] / Remote Unit Name (alternating display)

They will be alternately displayed when communication is carried out with any Remote Unit which has been already registered for "Visitor Entry" or any Remote Unit which has the same Remote Unit Number or the same Group Registration Info.



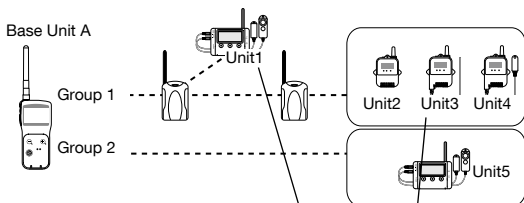
[Incompatible]

This message appears when communication is carried out between the RTR-500DC and an incompatible Data Logger.

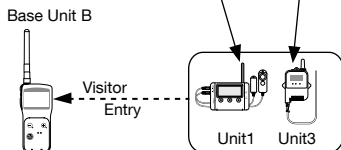
Communication with Remote Units registered for "Visitor Entry"

Remote Units registered for "Visitor Entry" will automatically be registered to as a "Visitor" group. A [Visitor] group carries out communication without Repeater(s).

Communication with Remote Units registered via "RTR-500DC for Windows"



Communication with Remote Units registered for "Visitor Entry"



Examples of Usage:

"Base Unit A" monitors all Remote Units.

"Base Unit B" gathers recorded data from the Remote Units in the [Visitor] group.

Communication Errors

If communication fails, one of the following may be the cause.

Wireless Communication Errors may occur:

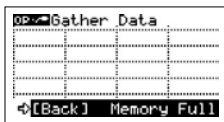
- When the Base Unit, Remote Unit, or Repeater battery power is low.
- When communication has been carried out between multiple RTR-500DC Units and one Remote Unit.
- When the wireless signal strength is weak.
- When the memory capacity is full (reaching memory capacity in the RTR-500DC)
- While the application is in communication.

Optical / Cable Communication Errors may occur:

- When the Base Unit or Remote Unit battery power is low.
- When the memory capacity is full (reaching memory capacity in the RTR-500DC)
- While the application is in communication.

When the memory capacity is full: [Memory Full]

Please download recorded data from the RTR-500DC to your PC and delete unnecessary data to make space for downloading new data from the Data Logger.



Deleting Selected Data

In the Main Menu, open [Data List] - [Select List] - [Select Delete].

- See page 64 or details.

In "RTR-500DC for Windows", open [RTR-500DC Manager] - [Communication] Menu to download data from the RTR-500DC to your PC and delete the data stored in the RTR-500DC. For details, see the "RTR-500DC Manager" Help.

Deleting All Data in Memory

In the Main Menu, open [Set Functions] - [Clear Memory].

- See page 67 for details.

When the Signal Strength is weak:

Please check the wireless signal strength.

In the Main Menu, open [WL Monitor Mode] - [Specify Remote Unit] to check the antenna shown in the window.

- See page 45- (⑪) for details.

Application related Communication Errors

After having connected an RTR-500DC to a PC and while the application is in communication with the Unit, it may not be possible to carry out communication functions via RTR-500DC operations. Please wait for the application to finish communication or cancel the communication, and carry out operations via the Unit.

Viewing Functions

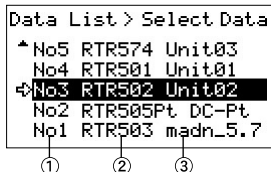
This section explains the viewing of recorded data in a graph or in a list.

Viewing Data Stored in RTR-500DC

Here you can view and check data stored in the RTR-500DC Unit.

Viewing a Data List: <List> button / [Data List]

1. Press the <List> button on the RTR-500DC or open [Data List] in the Main Menu to view the Data List.



① **List No.**

This shows the number assigned automatically in the order the data was downloaded.

② **Device Type (Remote Unit)**

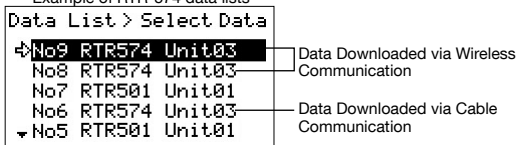
③ **Remote Unit Name**

This shows the Remote Unit Name entered when Remote Unit Registration was carried out.

Data Lists for RTR-574 / 576

The data list display for the RTR-574 and RTR-576 changes depending on the communication method used for the download: Wireless Communication or Cable Communication.

Example of RTR-574 data lists



Data Downloaded via Wireless Communication

For the RTR-574, the downloaded data is stored as two sets of data: "Illuminance and UV Intensity" [No.8] and "Temperature and Humidity" [No.9]. (Data List [No.8] and [No.9]) For the RTR-576, the downloaded data is stored as two sets of data: "CO2 Concentration" and "Temperature and Humidity".

Data Downloaded via Cable Communication

When the data is downloaded via a communication cable, the data is stored as one set of data for all four channels (RTR-574) or all three channels (RTR-576). (Data List [No.6])

Detailed Information of Data: <List> button / [Data List]

1. Press the <List> button on the RTR-500DC or open [Data List] in the Main Menu to view the Data List.
2. Select data from the list and press the <List> button to open the detailed info window.
3. By moving the Operation Dial up and down and selecting different data, it is possible to view the detailed info of all data in numerical order in the list.

For RTR-501 / 502 / 503 / 505 / 507S / 576

Example of RTR-503 data details

①	No1	GROUP: -----	⑨
	RTR503	NAME: madn_5.7	⑧
②	2M☐		
③	8000		
④	Collect	: Jan. 02'10 02:15:20	
⑤	Start	: Dec. 21'09 23:35:40	
⑥	Latest	: Jan. 02'10 02:13:40	

Example of RTR-505-Pt data details

No5	GROUP: Group1	
RTR505Pt	NAME: T&D505	
105☐	SENSOR: Pt100	⑩
2		
Collect	: Mar. 31'11 20:02:27	
Start	: Mar. 31'11 20:00:00	
Latest	: Mar. 31'11 20:00:10	

For RTR-574

Example of Data including Illuminance and UV Intensity

No7	GROUP: Visitor	⑨
RTR574	NAME: Unit03	⑧
1M☐	56.83[klx·h]	
60	0.000[mW/s·h]	⑦
Collect	: Jan. 02'10 02:46:17	
Start	: Jan. 02'10 01:47:10	
Latest	: Jan. 02'10 02:46:10	

① Device Type (Remote Unit)

② Recording Interval and Mode

This shows the Recording Interval and Mode set in the Remote Unit.

Example: 2S☐ = 2-second interval, One Time Mode

30M☐ = 30-minute interval, Endless Mode

③ Number of Recorded Data

④ [Collect]: Data Collection Date / Time

This shows the date and time when data was downloaded into RTR-500DC.

⑤ [Start]: Recording Start Date / Time

This shows the date and time when recording was started in the Remote Unit.

⑥ **[Latest]: Date / Time of Latest Data**

This shows the date and time that of the last recording.

⑦ **Cumulative Values**

For Illuminance and UV Intensity data from RTR-574, cumulative measurements can also be viewed.

⑧ **[NAME]: Remote Unit Name**

This shows the Remote Unit Name entered when Remote Unit Registration was carried out.

⑨ **[GROUP]: Group Name**

When downloading data from the Remote Unit which has not been registered in the RTR-500DC, the group name will appear as "-----".

⑩ **[Sensor]: Type of Connected Sensor**

When using an RTR-505-TC (Thermocouple) or an RTR-505-Pt (Pt100, Pt1000), this shows the sensor type being connected to the Remote Unit.

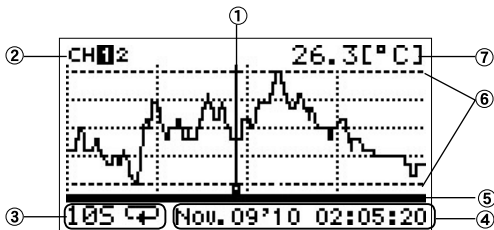
Viewing the Graph

Graph Display: <List> button / [Data List]

1. Press the <List> button on the RTR-500DC or open [Data List] in the Main Menu to view the Data List.
2. Select data from the list and click [Graph Display] to view the data in graph form.
 - Press the Operation Dial to cancel the Graph Display.

How to Read the Graph

A graph is displayed for each channel of data.



① Cursor Line (blinking)

By moving the Operation Dial, you can scroll the cursor line left and right.

② Channels for Display

If there are multiple channels of recorded data, you can change the channel on display by holding in the Operation Dial (for about one second).

③ Recording Interval and Mode

The "Recording Interval" and "Recording Mode" for the displayed data are shown here.

Example: 2S → 1 = 2-second interval, One Time Mode

30M → 1 = 30-minute interval, Endless Mode

④ Date and Time of Cursor Position

The date and time of the current cursor position are shown here.

⑤ Graph Display Range

When a portion of the graph has been zoomed-in on, this line shows the range of data currently on display from the entire range of recorded data.

⑥ Upper Limit / Lower Limit

If Upper and/or Lower Limits have been set in the Remote Units, these limits will be shown using thick dotted lines.

⑦ Measurement at Cursor Position

The corresponding measurement value is displayed for the date and time where the cursor is positioned.

Temperature: °C , °F

Humidity: %RH

Illuminance: lx, klx

UV Intensity : mW/cm²

CO2 Concentration : ppm

Voltage : V

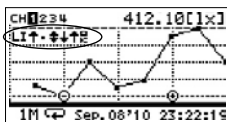
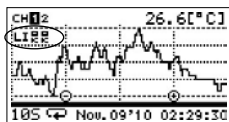
4-20mA : mA

Pulse : Pulse ↑ (Rising), Pulse ↓ (Falling)

Data Range Check and Judgement






The RTR-500DC will check if data has exceeded a set Upper or Lower Limit, and the judgement result will be displayed at the top left for the first 5 seconds after opening the graph.

Display Example of Judgement Results



Icons for the Judgement Results

Starting from [CH1], the results will be displayed in rotation.

	(OK)	No measurements were over the set limits.
		One or more measurements exceeded the Upper Limit.
		One or more measurements exceeded the Lower Limit.
	(Upward and Downward Arrow)	Measurements exceeded both the Upper and Lower Limits.
	(DOT)	Upper and Lower Limit Settings were not made.

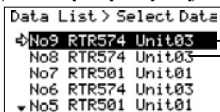
Viewing RTR-574 / 576 Data in a Graph

The graph display for the RTR-574 / 576 data changes depending on the communication method (Wireless Communication or Cable Communication) used for the download.

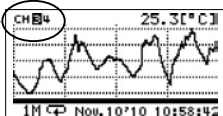
Data Downloaded via Wireless Communication

For the RTR-574, the downloaded data is stored as two sets of data: "Illuminance and UV Intensity" and "Temperature and Humidity". For the RTR-576, the downloaded data is stored as two sets of data: "CO2 Concentration" and "Temperature and Humidity".

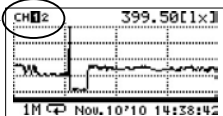
Example of RTR-574 data
(Data List [No.9] and [No.8])



Graph for Channel 3 and 4
(Temperature and Humidity)



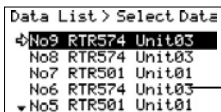
Graph for Channel 1 and 2
(Illuminance and UV Intensity)



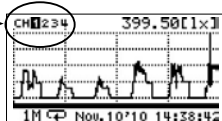
Data Downloaded via Cable Communication

When the data is downloaded via a communication cable, the data is stored as one set of data for all four channels (RTR-574) or all three channels (RTR-576).

Example of RTR-574 data (Data List [No.6])



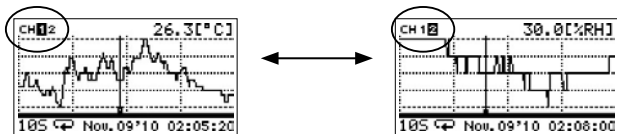
Graph for 4 Channels



Operating the Graph

Changing the Channel on Display

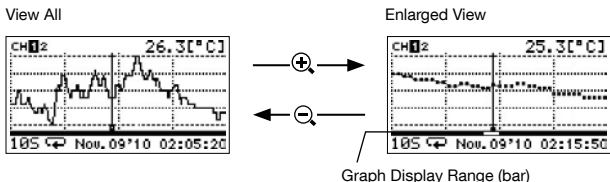
By pressing and holding the dial while viewing a graph display, you can change the channel on display.



Enlarged View

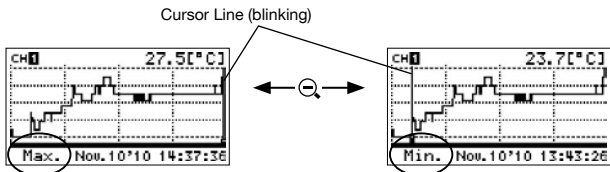
Press the <List> button while the entire graph is on display (x1) to zoom in on the image.

Press the <Collect> button while zooming in on one part of data to return to the original whole graph size.



Checking the Highest / Lowest Readings

With each pressing of the <Collect> button while the entire graph is on display (x1), a cursor line will move to the highest and lowest reading in turn.



Deleting Selected Data

Deleting Selected Data : [Data List] / <List> button

1. Press the <List> button on the RTR-500DC or open [Data List] in the Main Menu to view the Data List.
2. Select data from the list and click [Select Delete].



Data List > Sel. Delete
[Back] List No2
↔Execute

- To delete all data stored in the RTR-500DC, in the Main Menu open [Set Functions]
- [Clear Memory].

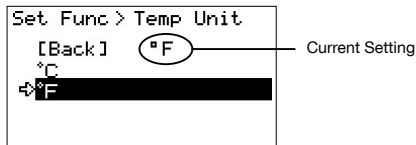
Making RTR-500DC Unit Settings / Others

Operational Settings for RTR-500DC

Operational settings can be made from [Set Functions] in the Main Menu.

Changing Unit of Temperature

1. In the Main Menu, open [Set Functions] - [Set Temp Unit].
2. Select the desired unit of temperature (°C or °F).



Adjusting the Backlight

1. In the Main Menu, open [Set Functions] - [Set Backlight].
2. Change the value by moving the dial up and down.

Setting Values: 1 to 100, [OFF] (Factory Default Setting: 80)



If the Unit is not used for more than five seconds, the LCD Backlight will automatically turn off to save battery power.

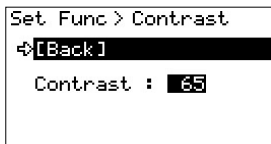
Once operation is re-started, it will automatically turn back ON.

When the Unit is connected to an AC adaptor, the Backlight remains ON.

Adjusting Contrast

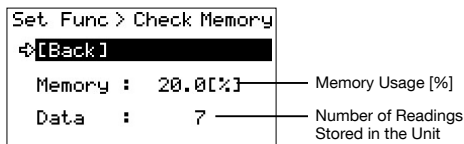
1. In the Main Menu, open [Set Functions] - [Set Contrast].
2. Change the value by moving the dial up and down.

Setting Values: 0 to 100 (Factory Default Setting: 65)



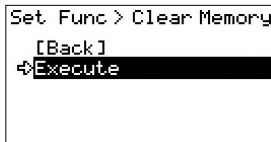
Checking Memory

1. In the Main Menu, open [Set Functions] - [Check Memory].
2. Here you can view your current memory usage and the number of readings stored in the Unit.



Deleting All Data

1. In the Main Menu, open [Set Functions] - [Clear Memory], and select [Execute].



Making Clock and Time Zone Settings via RTR-500DC Operations



Clock and Time Zone settings can also be made from the "RTR-500DC Settings Utility".

When making settings via the "RTR-500DC Settings Utility", it is not necessary to carry out operations from the RTR-500DC Unit.

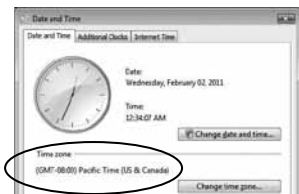
1. In the Main Menu, open [Set Functions] - [Set Clock].
2. Set the desired values for clock and time zone.

Set Func > Set Clock
[Back]
Jan/08/' 10 02:14:45
Time Zone GMT+00:00

- ① Moving the Operation Dial up and down will change the selection item of the display in the order of month, day, year, hour, minute, second, and [Time Zone] (time difference from GMT).
 - ② By pressing the dial, the value for that item will flash.
 - ③ Change the value by moving the dial up and down.
 - ④ Press the dial again to set the selected value and move to the next settings item.
3. After having completed the clock and time zone settings, move the arrow to [Back] and press the dial to return to the Main Menu.

Figuring Out Your Time Zone

Right click on the clock in the task bar of your computer, and select [Adjust Date/Time].



Set the displayed time zone into the RTR-500DC.

- Please note that depending on your Windows OS, the time zone may be displayed in UTC format instead of GMT.

Using the RTR-500DC in Areas that Observe Daylight Savings Time

When daylight savings time begins, move the clock settings in the Unit one hour ahead and add one hour to the time zone.

EX1: When the clock is 12:00 and the time zone is GMT+07:00:

Change the clock to 13:00 and the time zone to GMT +08:00.

EX2: When the clock is 9:00 and the time zone is GMT - 08:00:

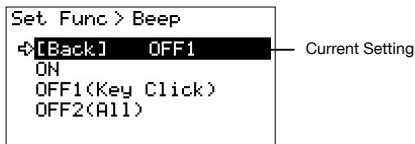
Change the clock to 10:00 and the time zone to GMT - 07:00.

When daylight savings time ends, set them back to the original values.

Setting the Buzzer OFF

By setting to OFF the beep, the warning buzzer will not go off even if the RTR-500DC receives information of a Remote Unit Warning during a monitoring session.

1. In the Main Menu, open [Set Functions] - [Beep].
2. Select [ON] or [OFF].



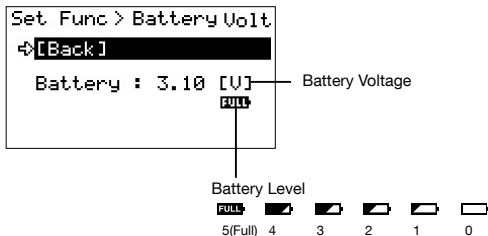
OFF1 (Key Click): Turns off sound for button operation. Warning buzzer will still beep.

OFF2 (All): Turns off all beeps including the warning buzzer.

Checking Battery Status of the RTR-500DC

A battery life warning mark, which indicates that battery replacement is needed, will appear when battery voltage depletes to about 2.30V. Here you can check the detailed battery status such as the battery voltage (numerical value) and the battery level.

1. In the Main Menu, open [Set Functions] - [Battery Voltage].



Monitoring Radio Waves



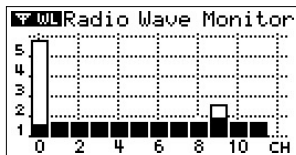
It is not possible to use the [Radio Wave Monitor] function in the RTR-500DC while carrying out communication from the software application.

There may be some instances in which, due to other wireless communication devices using radio waves or other radio wave interferences, communication capability of RTR-500DC does not meet expected standards. Monitoring radio waves with the RTR-500DC Unit before carrying out Remote Unit registration via "RTR-500DC for Windows" will help you set a frequency channel to avoid interference and reduce the chances of communication errors.

1. In the Main Menu, open [Set Functions] - [Radio Wave Monitor].

2. The Unit will search for radio waves and display wireless signal levels.

- Press the Operation Dial to cancel the radio wave monitoring function.
- Until the function is canceled, wireless communication will still be in progress for the RTR-500DC.
- While using this function, the Auto Power Off Function will be disabled.



Vertical Axis: Wireless Signal Level (1 to 5)
Horizontal Axis: Frequency Channel (0 to 11 CH)
White Bar: Maximum Value of Radio Waves the Unit has Received
Black Bar: Current Value of Radio Waves*

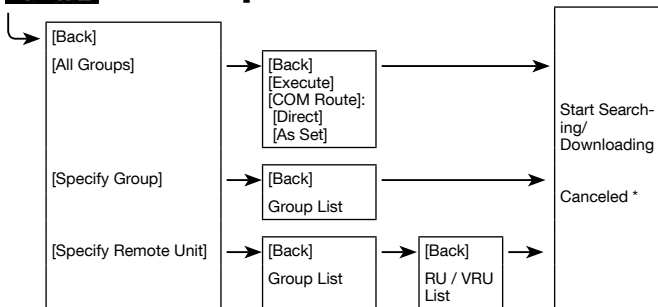
* Due to background noise, the channels for which communication has not taken place will display about Level 1 of wireless signal in graph.

Assigning a Communication Frequency Channel

When assigning a frequency channel for a Group in the Remote Unit Registration, select a channel with a short white/black bar. A longer white/black bar shows stronger signal strength which indicates the presence of other wireless communication devices.

Menu List

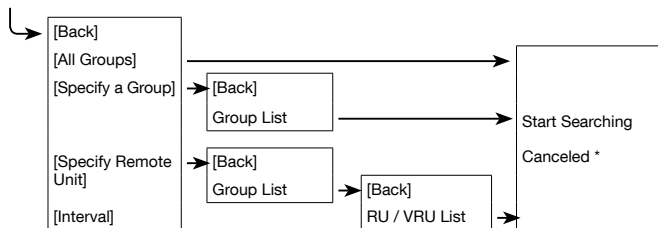
[F WL Gather Data]



* Move the arrow to [Cancel] and press the Operation Dial to cancel the operation during a download session by Group.

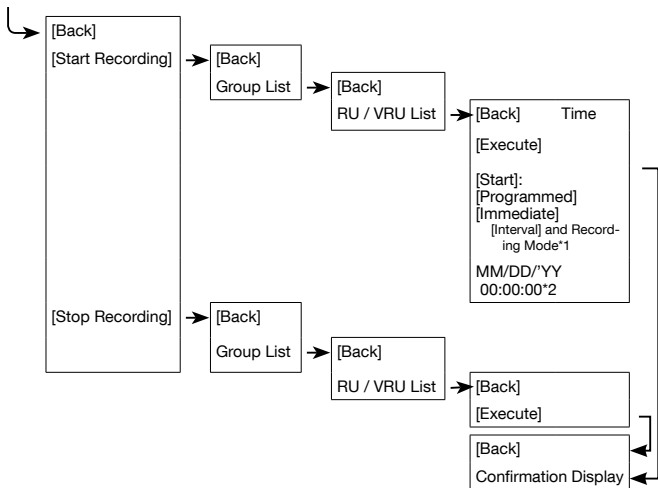
* While a download session with a Remote Unit is in progress, press the Operation Dial to cancel communication with that Remote Unit.

[F WL Monitor Mode]



* It is possible to cancel by pushing the Operation Dial while Searching.

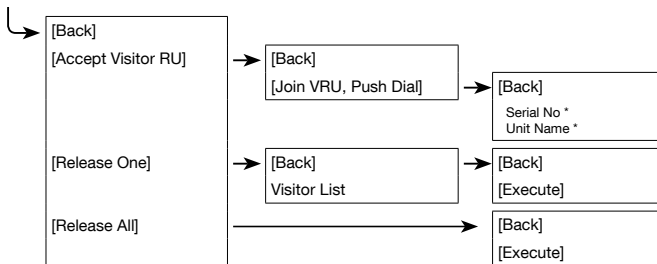
[F WL Record Settings]



* 1: For Confirmation Only.

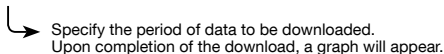
* 2: For Programmed Start.

[Visitor Entry]

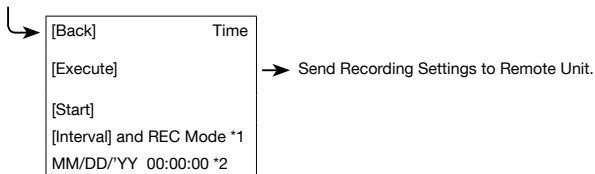


* For Confirmation Only.

[Gather Data]



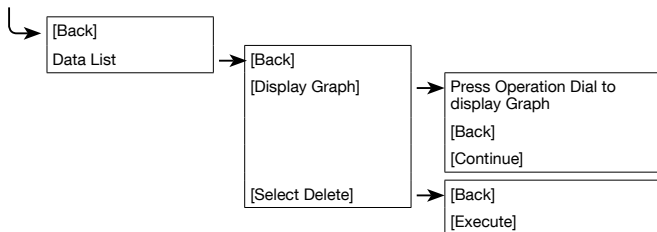
[Record Settings]



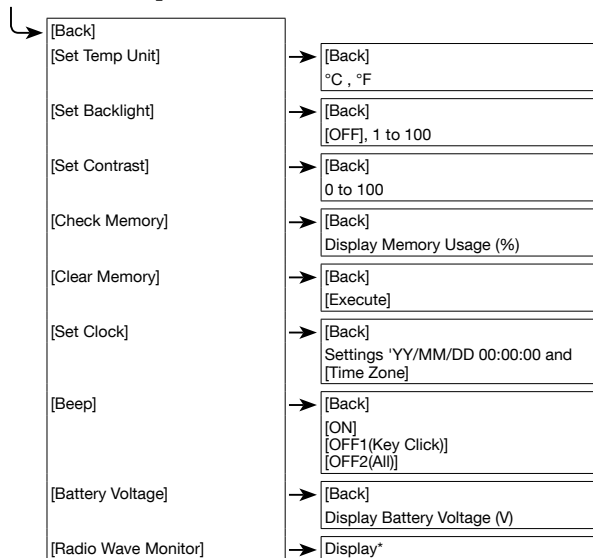
* 1: For Confirmation Only.

* 2: For Programmed Start.

[Data List]



[Set Functions]



* It is possible to cancel by pushing the Operation Dial.

FAQ

Q&A about RTR-500DC

Q1: Can this be used in any country in the world?

A: The RTR-500DC has been designed to comply with CE Marking (EU) regulations and should not be used in any countries other than those in which either of these regulations are the standard.

Q2: I want to use the RTR-500DC outdoors; is the unit waterproof, moisture proof and dust proof?

A: The unit is not waterproof, moisture proof, or dust proof. When carrying around outdoors or when collecting data outdoors please be careful not to expose unit to water or dust.

Also please follow these precautions:

- Do not handle unit with wet hands.
- Do not replace batteries with wet hands.
- When using optical communication and the Remote Unit is wet, please make sure to dry it off before trying to use optical communication.

Q3: How can I return the RTR-500DC back to its original factory default settings?

A: Connect the target RTR-500DC to your PC with a USB cable. In the Settings Utility Menu, select [Return Base Unit to Factory Default Settings] and the settings will be returned to the default factory ones.

Q&A about Settings

Q1: The computer does not seem to recognize the USB connected RTR-500DC, why not?

A: Please check the following:

Check the RTR-500DC

- Check the USB connection between the computer and the RTR-500DC.

Check your Computer

- Make sure that the software has been installed properly and is working.
- Use your computer's Device Manager to check whether or not the USB device driver has been installed properly. (Please see [Help for Unit Recognition Failure])
- Connect a different USB device (mouse, digital camera, etc...) other than an RTR-500DC unit to your PC and see if it operates properly.
- If your PC has more than one USB Port, try connecting the USB cable to a different port.
- If you have access to another computer, try seeing if communication works with the other computer.
- Check to make sure that not more than one Base Unit is connected to the PC.
- If there are more than one connected at the same time, the connected units cannot be recognized.

If after checking and trying the above there is no improvement please contact the dealer where the product was purchased.

Q2: The Remote Unit is not recognized by my computer, what is the problem?

A: Please check the following:

For RTR-501 / 502 / 503 / 505 / 507S

- Make sure that the RTR-500DC is recognized by your PC.
- Check the USB connection between the computer and the RTR-500DC.
- Make sure the optical communication areas are aligned properly.
- Make sure that the slitted areas are aligned properly.
- Make sure that there is sufficient battery power in the target Remote Unit.
- The remaining battery power can be checked on the display of the Remote Unit.
- When it is time for the battery to be replaced, the [BAT] mark will appear.
- The Remote Unit battery level can also be checked by using the "Monitoring" function in the RTR-500DC. (See page from 45 for details)

A: For RTR-574 / 576, RTR-500

- Check the USB connection between the computer and the device.
- Make sure that the software which came with the device has been installed properly and is working.
- Use your computer's Device Manager to check whether or not the USB device driver has been installed properly. (Please see [Help for Unit Recognition Failure])
- Connect a different USB device (mouse, digital camera, etc...) to your PC and see if it operates properly.
- If your PC has more than one USB Port, try connecting the USB cable to a different port.
- If you have access to another computer, try seeing if communication works with the other computer.
- Check to make sure that not more than one device is connected at the same time. If there are more than one connected at the same time, the connected units cannot be recognized.

If after checking and trying the above there is no improvement please contact the dealer where the product was purchased.

Q3: The software application does not start, why not?

- A:** It is not possible to carry out communication from the software application while using the RTR-500DC communication functions (such as the [Monitor Mode] or the [Radio Wave Monitor]). Make sure to quit the communication functions in progress before using the application.

Q&A about Operations after Settings

Q1: Communication errors occur frequently, why and what can I do?

A: If Wireless Communication Errors are occurring:

Take the RTR-500DC and carry it to a spot where communication is possible. In addition please check or try the following items.

- Try placing new batteries in the Base Unit, Remote Unit and or Repeater.
- Make sure that not more than one is trying to communicate at the same time; this will cause communication errors.
- The radio signal strength may be weak.
- Check to see if the RTR-500 series loggers are using the same frequency with other wireless communication devices for transmission. If they have the same or nearly the same frequency, change either one to avoid interference.

*** IMPORTANT**

In order to change the frequency channel for the RTR-500 series loggers, you must first delete all Remote Units (or Repeaters) with the same frequency channel setting, and then register them again. In the Remote Unit (or Repeater) Registration window, change the Communication Frequency Channel and then click "Register".

Channel Numbers and Corresponding Frequencies for RTR-500 Series

CH	Frequency (MHz)	CH	Frequency (MHz)
0	869.7125	6	869.8625
1	869.7375	7	869.8875
2	869.7625	8	869.9125
3	869.7875	9	869.9375
4	869.8125	10	869.9625
5	869.8375	11	869.9875

- The communication errors may be caused by insufficient memory in the RTR-500DC. (Memory FULL)
- While the application is in communication.

If Optical or Cable Communication Errors are occurring:

- Please check the following, wait and try communication again.
- Try placing new batteries in the Base Unit and Remote Unit.
- The communication errors may be caused by insufficient memory in the RTR-500DC.(Memory FULL)
- While the application is in communication.

Q2: Is it possible to adjust or alter recorded data that has been downloaded by the RTR-500?

A: In order to maintain the integrity and trustworthiness of the recorded data, the software has been designed to not allow modifications to be carried out on actual recorded data. If it is necessary to edit recorded data, in the Temperature / Humidity Graph or the Multi-scale Graph save the data to text file and use a common spreadsheet software such as Excel to edit the text file data.

Q3: Can I merge all the RTR-574 / 576 data that has been downloaded via wireless communication into one set of data?

A: Although data downloaded from the RTR-574 is stored as two sets of data: "Illuminance and UV Intensity" (CH1 and CH2) and "Temperature and Humidity" (CH3 and CH4), it is possible to display and save them as one set of data.

Moreover, data downloaded from the RTR-576 which is also stored as two sets of data: "CO2 Concentration" (CH1) and "Temperature and Humidity" (CH2 and CH3), can be displayed and saved as one set of data.

This can be done in either of the following two ways:

Opening from the Multi-scale Graph

In the Multi-Scale Graph, in the [File] menu click on [Open] and select the downloaded data file you wish to open.

Opening from the RTR-500DC Manager

1. Connect a RTR-500DC via USB to your PC and open the RTR-500DC Manager.
2. From the Data Info List, select the set(s) of RTR-574 / 576 data you wish to save to your PC by using the <Shift> key or the <Ctrl> key.
3. In the [Communication] Menu, click on [Download Data] to save the recorded data to the PC.
4. After selecting data in the Data Info List, right click to open a context menu from which you can select [View Graph]. The [Save as...] window will appear.
5. After assigning a name and saving the data, the Multi-scale Graph will open where you can view the Graph for the selected data.

Q4: When registering the Remote Unit I made settings for "Scale Conversion", but in the Remote Unit and Data Collector scale conversion is not being carried out. Why?

A: The measurement values and graphs displayed on Remote Unit's and Data Collector's LCD will not be converted, and therefore the measurement before scale conversion will appear. However, the downloaded data has the info for the scale conversion settings which you have made, and you can view the converted measurements in graph form by using "RTR-500DC Manager" to download data to a PC and "Multi-Scale Graph" to open the downloaded data.

The following Remote Units can use "Scale Conversion":

RTR-505-V (Voltage)

RTR-505-mA (4-20mA)

RTR-505-P (Pulse)

* What is "Scale Conversion"?

Make settings here to view the downloaded data in the desired unit. For details, see [Remote Unit Registration] in the "RTR-500DC Settings Utility" or "Multi-Scale Graph" application's Help in the [Tool] menu.

Specifications

Data Collector RTR-500DC Unit

Compatible Devices	Remote Units: RTR-501 / 502 / 503 / 507S / 574 / 576 / 505-TC / 505-Pt / 505-V / 505-mA / 505-P (Including L Type and S Type) Repeater: RTR-500
Maximum Number of Registrations	Remote Units: 32 units (*1) x 7 groups Repeaters: 15 units x 7 groups
Storage Capacity	When downloading from units filled to logging capacity: - 15 units of RTR-501 / 502 / 503 / 505 / 507S - 7 units of RTR-574 - 10 units of RTR-576 When downloading from units of any type containing small amounts of data, it can store and manage up to 250 download sessions.
Communication Interfaces	<Between Base Unit(s) - (Repeaters) - Remote Unit(s)> - Short Range Wireless Communication ETSI EN 300 220 Frequency Range: 869.7 to 870MHz, RF Power: 5 mW - Optical Communication With compatible Remote Units except RTR-574 and RTR-576 - Serial Communication RS-232C (*2) With RTR-574 and RTR-576 <Between Base Unit - PC> - USB Communication - Serial Communication RS-232C (*3)
Wireless Transmission Range	Approx. 150 meters (500 ft) if direct and unobstructed
Communication Time	Data Download Time from Remote Unit (for 16,000 readings) - Via wireless communication: About 2 min. The same amount of time will be necessary for each Repeater. - Via optical communication: About 3 min. - Via serial communication: About 22 sec.
Power	AAA Alkaline Battery x 2, AAA Ni-MH Battery x 2, AC Adaptor AD-06C1, USB bus power
Battery Life (*4)	Expected battery life with 2 AAA alkaline batteries: - Monitoring Current Readings and Remote Unit Status: 96 hours of continuous use (For communication without Repeaters at 60 second intervals) - Monitoring Radio Waves: 32 hours of continuous use - Downloading Data via Wireless Communication: 730 consecutive sessions (When downloading RTR-501 at full logging capacity, without Repeaters, with LCD backlight Off)
Dimensions	H 125 mm x W 58 mm x D 26.3 mm (excluding antenna) Antenna Length: 109 mm

Weight	Approx. 105 g
Operating Environment	Temperature: 0 to 50 °C Humidity: 90 %RH or less (no condensation)

Software (RTR-500DC for Windows)

Compatible OS (*5)	Microsoft Windows 10 32 / 64bit Microsoft Windows 8 32 / 64bit Microsoft Windows 7 32 / 64bit
Display Languages (*6)	English, Spanish, French, German, Italian

*1: For RTR-505, RTR-574, and RTR-576, registration of one unit will be counted as two units.

*2: Optional communication cable TR-6C10 is required for serial communication with RTR-574 and RTR-576.

*3: Customers wishing to write their own software, please contact your local distributor for the serial communications protocol specifications. (Note: Optional serial communication cable TR-07C is also required.)

*4: Battery life varies depending upon multiple factors including ambient temperature, frequency of communication, and battery performance. All estimates are based on operations carried out with a new battery and are in no way a guarantee of actual battery life.

*5: For installation, it is necessary to have Administrator (Computer Administrator) rights.

*6: We recommend using an operating system in the same language as the display language. Operation in different languages is not guaranteed.

The specifications listed above are subject to change without notice.

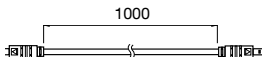
Options

Communication Cable

TR-6C10: RS-232C Communication Cable

Cable Length: 1.0m

For communication between
RTR-500DC and RTR-574 / 576



AC Adaptor

AD-06C1

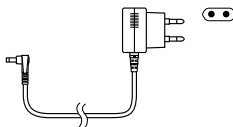
Input: AC 100-240V

Output: DC 6V 1.0A

Frequency: 50/60Hz

Cable Length: 1.8m

Plug Type: C



Product Support

For support, please contact the distributor from which you purchased the product.

A list of distributors can be found at:

<http://www.tandd.com/purchasing/>

Product Information

Product information can be found at:

<http://www.tandd.com/product/>

Data Collector RTR-500DC Introductory Manual

T&D CORPORATION

817-1 Shimadachi, Matsumoto, Nagano 390-0852, Japan

Website : <http://www.tandd.com/>

FAX : +81-263-40-3152 E-mail : support@tandd.com

© Copyright T&D Corporation. All rights reserved.

Printed on recycled paper.