

# Thermo Recorder log-EZ User's Manual

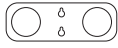
Model No. TR32B

## Package Contents

Before use, please confirm that all of the contents are included.



Data Logger



Stand  
Screw x 2



AA Alkaline Battery  
(LR6)



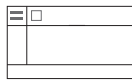
Registration Code  
Label



User's Manual



Safety Instructions  
and Specifications

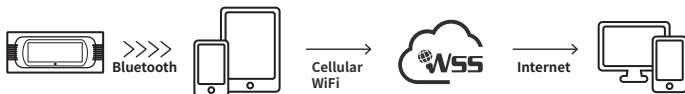


Warranty

## Introduction

Thermo Recorder log-EZ is a handy Bluetooth data logger designed to measure and record temperature and humidity data, and which is accessed using the T&D Thermo application running on a mobile device.

By using our free cloud service, you can access collected data via a web browser and analyze with the T&D Graph Windows application.



The following application is available for mobile devices with iOS and Android operating systems.

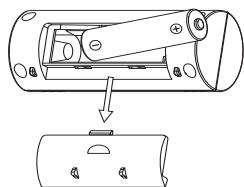


### T&D Thermo

Mobile app for device configuration, data collection and graphing, data upload to the cloud, and report creation

## Device Preparation

### Battery Installation



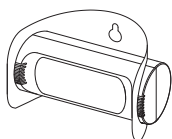
Recording will begin upon insertion of the battery.

#### Default Settings

Recording Interval: 10 minutes  
Recording Mode: Endless\*

\*Upon reaching the logging capacity, the oldest data will be overwritten and recording will continue.

### How to Use the Stand



Slightly bend the stand into a curved shape, and insert the logger through the round holes of the stand so that the stand holds the unit.

It can then be placed on a flat surface such as a table or desk, or by using the supplied screws hung on a wall.



## The Display

### Marks on LCD Screen



#### COM Connection/Communication Status

ON: Bluetooth Connected

BLINKING: Bluetooth Communication in progress

#### Battery Warning Mark

When this appears, replace the battery as soon as possible. A low battery may cause communication errors.

### Messages



#### Low Battery Condition

After the battery warning mark is displayed, if you continue to use the logger without replacing the battery, this message will appear alternately with the current temperature and humidity.

When this appears, the recording will continue but Bluetooth communication will stop.



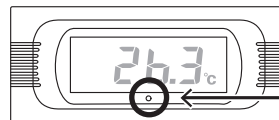
#### Operation Stopped

If the battery is further left unchanged until the LCD display goes blank, all recorded data in the logger will be lost.

### Connection LED

BLINKING (in blue) : Bluetooth Connected (LED can be disabled from the app.)

OFF : Bluetooth Not Connected



Connection LED

## Recording Intervals & Maximum Recording Times

Estimated Time until Logging Capacity (8,000 data sets) is Reached

Rec Interval	1 sec.	30 sec.	1 min.	10 min.	60 min.
Time Period	About 2 hours	About 2 days 18 hours	About 5 days 13 hours	About 55 days	About 11 months

For details about how to use the Thermo Recorder log-EZ, refer to the HELP available from the following website.

<https://tandd.com/support/webhelp/tr32b/eng/>



## T&D WebStorage Service

T&D WebStorage Service (hereinafter referred to as "WebStorage") is a free cloud storage service provided by T&D Corporation.

It can store up to 450 days of data depending on the recording interval set for the device. Using in conjunction with the "T&D Graph" software allows for downloading stored data from the WebStorage for analysis on your computer.



T&D WebStorage Service  
Registration / Login  
<https://webstorage-service.com/>

A new WebStorage account can also be created through the T&D Thermo App. Refer to "T&D Thermo (Basic Operations)" in this document.

## T&D Thermo (Basic Operations)

### 1 Download the App

- 1.1 "T&D Thermo" is available for free download from the App Store or Google Play Store.

### 2 Set up a T&D WebStorage Service Account

#### 2.1 If you don't use the WebStorage go to Step 3.1:

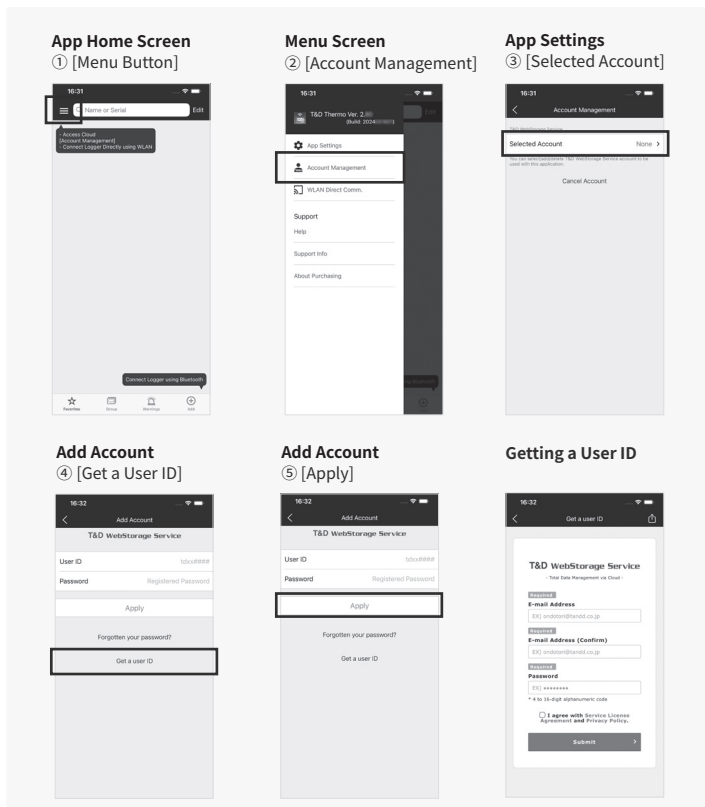
In order to send data to the WebStorage, it is necessary to add an account to the App.

#### 2.2 If you don't have a WebStorage account:

Tap ① [Menu Button] on the upper left corner of the app home screen → ② [Account Management] → ③ [Selected Account] → ④ [Get a User ID] to create a new account. Go back to the home screen and tap ① [Menu Button] → ② [Account Management] → ③ [Selected Account] → ⑤ [Apply] after entering the account information you created.

#### 2.3 If you already have a WebStorage account:

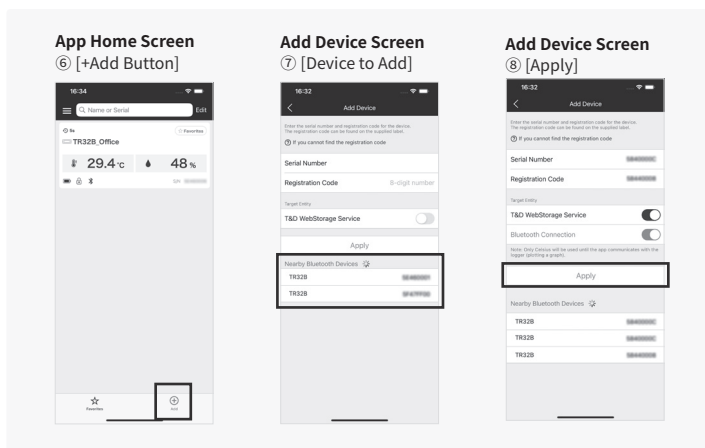
Tap ① [Menu Button] on the upper left corner of the app home screen → ② [Account Management] → ③ [Selected Account] → ⑤ [Apply] after entering your account information.



### 3 Add a Device to the App

- 3.1 Tap ⑥ [+Add Button] in the lower right corner of the home screen to open the Add Device screen. The app will automatically search for nearby devices and list them at the bottom of the screen. Select and tap the device to add from the list of Nearby Bluetooth Devices. ( ⑦ [Device to Add])

- 3.2 Enter the registration code (that can be found on the label supplied with the product), then tap ⑧ [Apply].  
When the device is successfully added, it will be listed on the home screen.

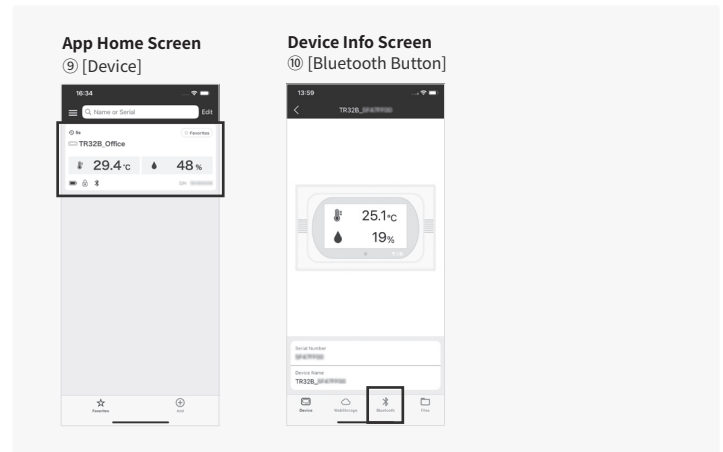


### 4 Collect Data from the Logger

- 4.1 In the list on the home screen, tap the target ⑨ [Device] to open the Device Info screen. When you tap the ⑩ [Bluetooth Button], the app will connect to the device, collect data and plot a graph.

#### 4.2 If a WebStorage account is set up (Step 2):

The data collected in Step 4.1 will be automatically uploaded to the WebStorage.



Refer to the HELP for more details about the functions and screens of the T&D Thermo App.

<https://manual.tandd.com/thermo/>



## T&D Graph

T&D Graph is a Windows software that contains a variety of useful functions including the ability to read and merge multiple data files, display recorded data in graph and/or list form, and save or print data graphs and lists.

It allows access to data stored in the T&D WebStorage Service for data analysis by inserting shapes and posting comments and/or memos on the displayed graph.

Please refer to the HELP for operational details.

[https://cdn.tandd.co.jp/glb/html\\_help/tdgraph-help-eng/](https://cdn.tandd.co.jp/glb/html_help/tdgraph-help-eng/)

