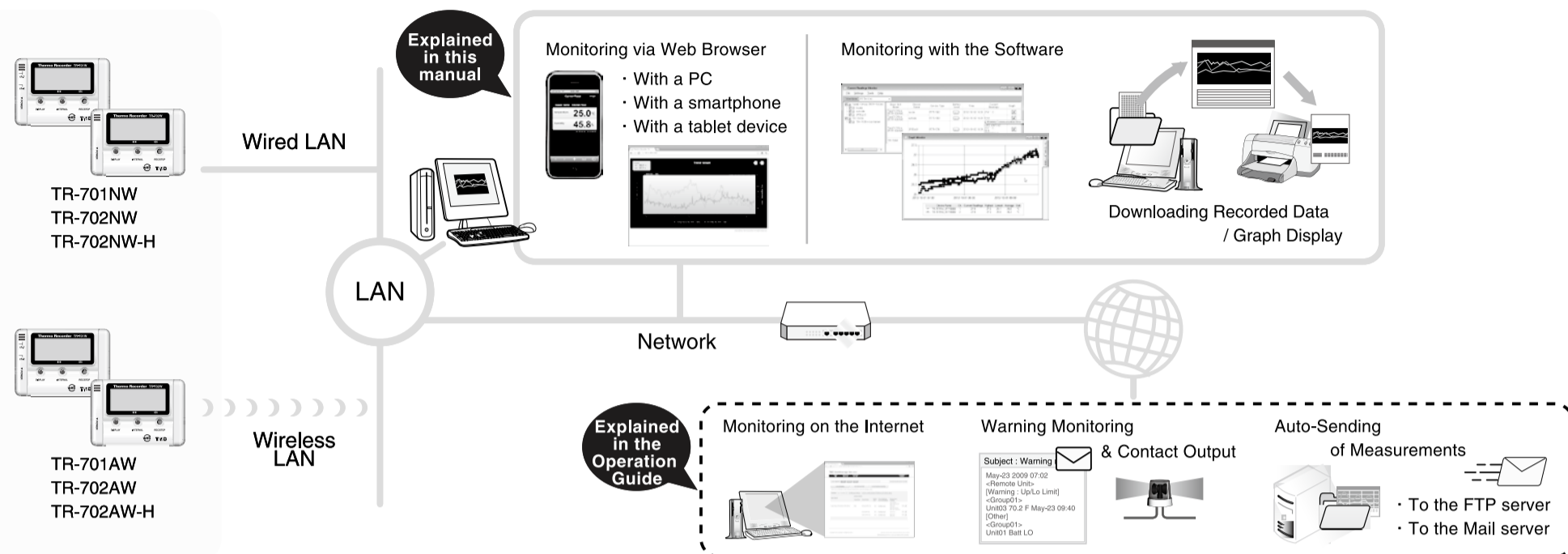


# Thermo Recorder TR-700W Series Getting Started Guide

TR-701NW and TR-702NW are for use with a wired LAN. TR-701AW and TR-702AW are for use with a wireless LAN (802.11b/g).

## What can the TR-700W Series devices do?

The TR-700W Series Data Loggers are equipped with a LAN interface. Temperature and humidity management in remote locations including the downloading of recorded data, the monitoring of current readings and the sending of warning mails: all of which can be done easily over a network. Network connection is available either via wired LAN or wireless LAN.



Terms to be Used	Definition
"device" or "TR-700W Series devices"	TR-701NW, TR-701AW, TR-702NW, TR-702NW-H, TR-702AW, TR-702AW-H
Current Readings	Measurements collected for monitoring current data
Recorded Data	Measurements stored in the device at the selected recording interval

**T&D CORPORATION**  
© Copyright T&D Corporation. All rights reserved. 2013.01. 16504900005 2nd Edition  
http://www.tand.com/

## Getting Ready

**Do not connect a device to your computer until the software has been installed.**

### STEP 1 Installing the Software

1. Start Windows and login using a User Account with Administrator (Computer Administration) rights.
2. Place the CD-ROM into your CD or DVD drive.
3. The [Install Program] window will appear.

If the [Auto Play] window appears:  
Click on [Run start.exe].

If the [Install Program] window does not appear automatically:  
Double click on the [start.exe] icon in the CD/DVD drive.

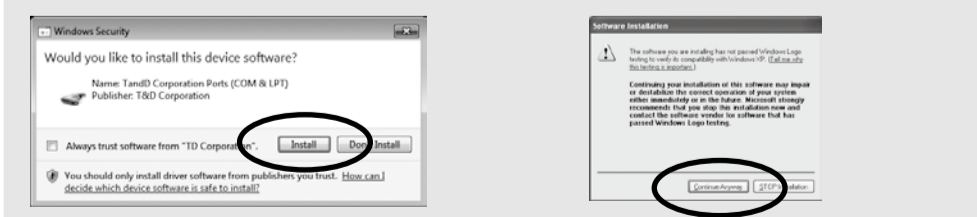
\* If you are using Windows 8, carry out the rest of the installation process on the "desktop" which can be accessed via a tile on the Start screen.

4. Select "Install TR-700W for Windows" and click the [Execute] button to start the installation.



5. Follow the directions as they appear to complete the installation.

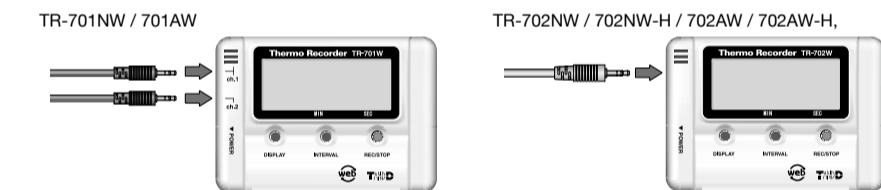
If a window appears such as the one below during installation, choose [Install] or [Continue Anyway].



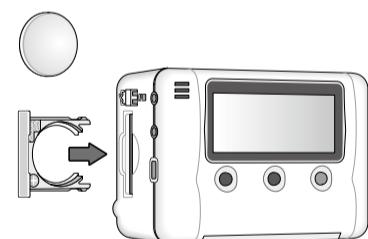
6. After installation, TR-700W for Windows will appear in the Windows Start Screen or Start Menu.
7. Repeat procedures 4 to 6 to install all the applications.

### STEP 2 Setting up the Device

1. Connect a sensor to the device.



2. Insert the battery for data backup. Remove the battery case and insert the battery making sure that + and - are in the correct direction.



The battery makes it possible to continue measuring and recording when AC power is not available due to a power outage. (Note that when using the battery only, network communication is not possible.)

\* If no battery has been installed and the AC adaptor cannot be used, all recorded data will be lost.  
\* Battery performance deteriorates by natural discharge and corrosion. Even when using both a battery and the AC adaptor, we suggest changing the battery somewhere between one and two years of use.

3. The measurement will be displayed on the LCD screen.

Under Normal Conditions:      During Sensor Error (no sensor connected / improper connection / sensor damaged):



For information about button operation on the device, please refer to the Operation Guide.

### STEP 3 Connecting the Device to a PC

1. Open the TR-700W for Windows from the Start Screen or Start Menu.
2. Open the TR-700W Settings Utility.



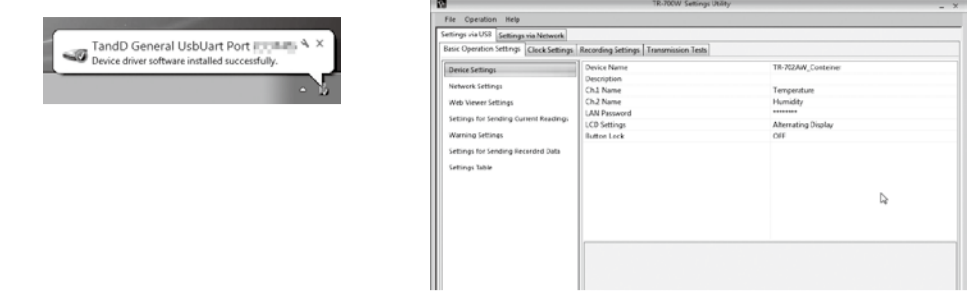
3. Connect the device with the supplied USB cable to your computer. The USB driver installation will start automatically.

\* Do not connect a device to your computer until the software has been installed.  
\* It is not necessary to connect the LAN cable or AC adaptor at this point.



If you are using Windows XP, the [Found New Hardware Wizard] window will appear. For details, see [Tips How to Install the USB Driver] printed on the back side of this paper.

4. After the USB driver installation is completed, the factory default settings will be displayed automatically in the settings window.



If the above settings information does not appear automatically:  
The USB driver installation may have failed. Please see [Help for Unit Recognition Failure] in the Operation Guide, and check the USB driver.



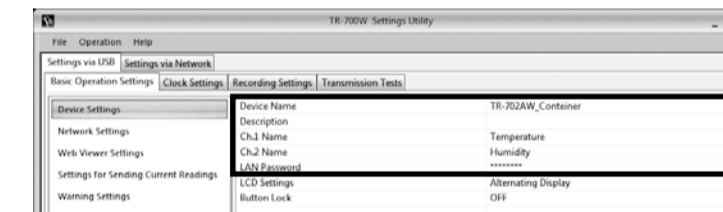
## Before Using the Device

### STEP 1 Making Initial Settings

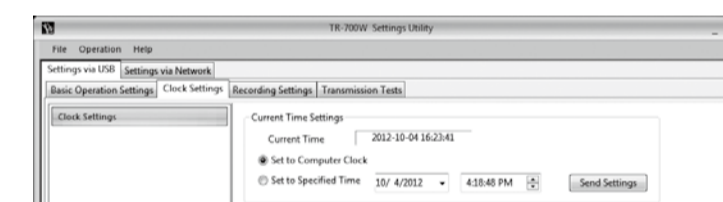
#### Make Basic Settings

1. In the [Basic Operation Settings] tab window, select the [Device Settings] menu.
2. Enter the following information in the [Device Settings] window, and click the [Send Settings] button.

Device Name	Assign a unique name for each device.
LAN Password	Enter the password here for connecting to a device via a network. This information is necessary for Monitoring Current Readings via Web Browser (see [Trying some Basic Operations]).



3. Select the [Clock Settings] tab.
4. Choose either "Set to Computer Clock" or "Set to Specified Time"; confirm the entries, and click the [Send Settings] button.

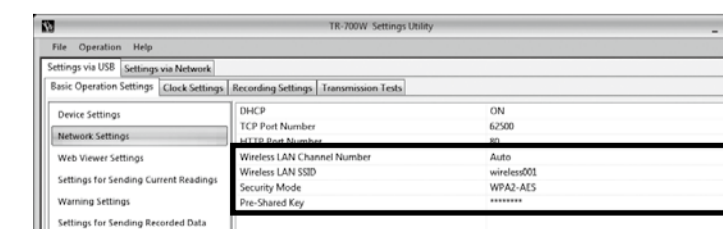


### STEP 2 Making Network Settings

1. In the [Basic Operation Settings] tab window, select the [Network Settings] menu.
2. Make settings for DHCP. Select "ON" to use DHCP. If you wish to use a static IP address, set [DHCP] to "OFF" and enter the IP address and other necessary information for each device.

For details, please see [Tips About DHCP] printed on the back side of this paper.

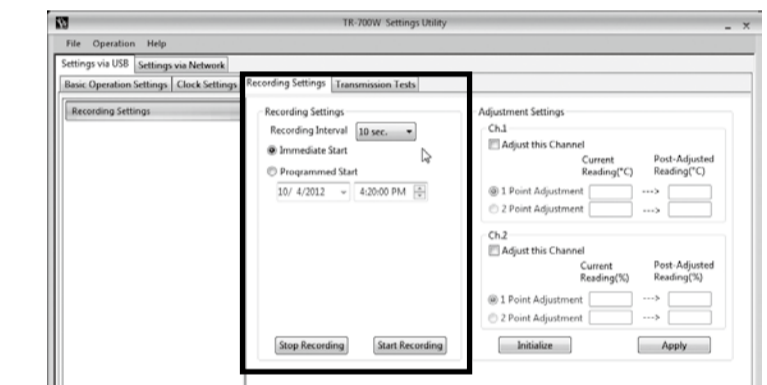
3. If you are using a TR-701AW / 702AW device, make sure to enter the following settings in conjunction with the wireless LAN access point being used.



- Wireless LAN settings tools such as AOSS (AirStation One-touch Secure System) and WPS (Wi-Fi Protected Setup) are not supported.
- The MAC address of the device can be found under the [Settings Table] menu.

### STEP 3 Making Recording Settings

1. In the [Recording Settings] tab window, select the [Recording Settings] menu.
2. Make Recording Condition Settings.



Recording Interval	Select a Recording Interval.
Recording Start Method	Immediate Start: Recording will start when the [Start Recording] button is clicked. Programmed Start: Recording will start at the specified time.
Unit of Temperature	Select the desired unit of temperature.

Below are some examples of recording interval and maximum recording time.

1 sec.	30 sec.	5 min.	15 min.	60 min.
2 hr 13 min	2 days 18 hr	27 days 18 hr	83 days 8 hr	333 days 8 hr

EX: Recording Interval of 30 seconds x data readings of 8,000 = 240,000 seconds (about 2 days and 18 hours)

\* Upon reaching the logging capacity, the oldest data will be overwritten and recording will continue.

3. Click [Start Recording].

Note that the recorded data stored in the device will be lost if you change the recording conditions or start a new recording session.

### STEP 4 Installing the Device

1. Place the device to the desired measurement location.
2. Connect a TR-701NW / 702NW device to the network device with a LAN cable.
3. Connect the supplied AC adaptor to the device.



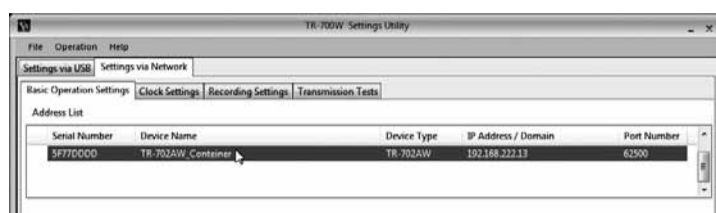
If you are using a TR-701AW / 702AW device, the Link Display LED will be on upon successful connection to a wireless LAN access point.

# Trying some Basic Operations

## Monitoring Current Readings via Web Browser

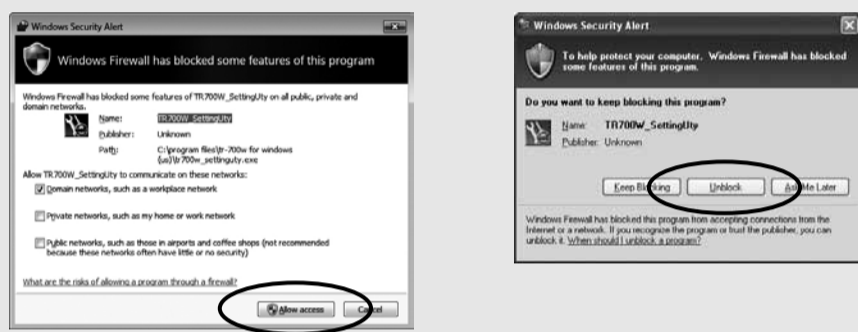
### When setting DHCP to "ON" in **Before Using the Device** :

1. Open the TR-700W Settings Utility, and select the [Settings via Network] tab. The device set in the **Before Using the Device** will appear in the address list.

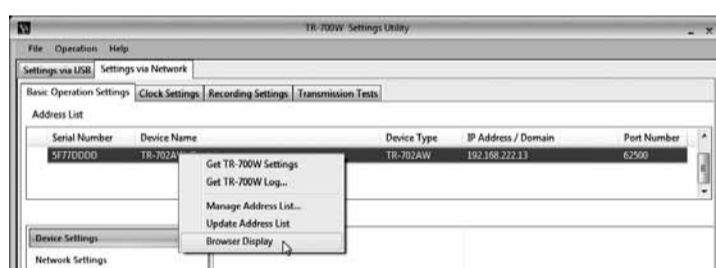


If the IP address does not appear in the address list, right click on the target device name and click [Update Address List]. If that does not work, see [Operation Guide] - [Troubleshooting] - [Q&A about Settings].

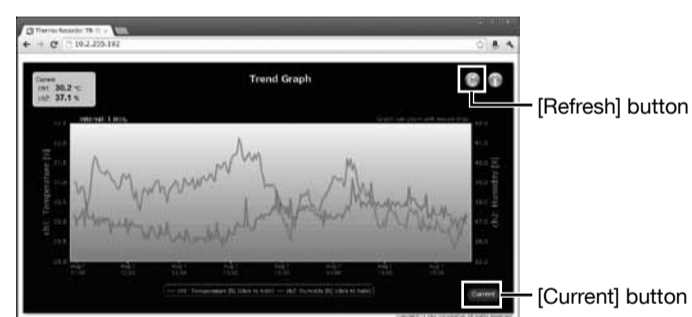
If the [Windows Security Alert] window pops up: Select either [Permit Access] or [Unblock].



2. Right click on the device in the address list, and select [Browser Display].

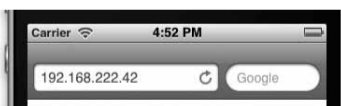


3. The browser will be opened and a graph displayed.



### When setting a static IP address in **Before Using the Device** :

1. Open your web browser, and in the address bar enter the IP address of the device you wish to view.

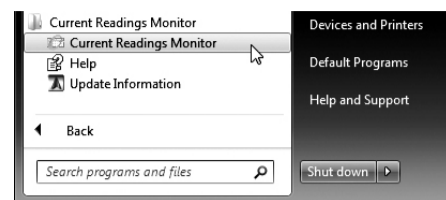


2. A graph will be displayed.

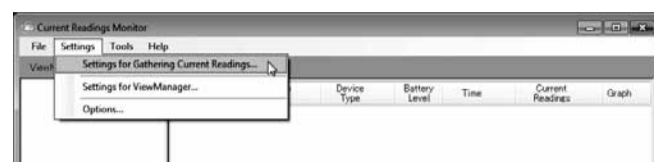
- Up to three simultaneous web browser connections are allowed for each device. To share current readings with many users or for monitoring over the Internet, please use our T&D WebStorage Service.
- The maximum number of readings that can be displayed in one graph is 736.
- The interval for uploading current readings into the graph can be changed from the [Basic Operation Settings] tab in the [Web Viewer Settings] menu.
- Although current readings are continually gathered at the set interval, in order to view the latest data in the graph area, it is necessary to manually refresh the display using the Web Viewer [Refresh] button.

## Monitoring Current Readings with the Software

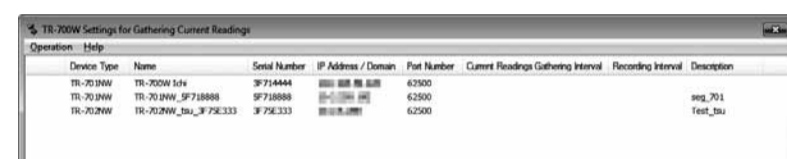
1. Open the Current Readings Monitor.



2. Go to [Settings] - [Settings for Gathering Current Readings], and in the window that appears select [TR-700W].

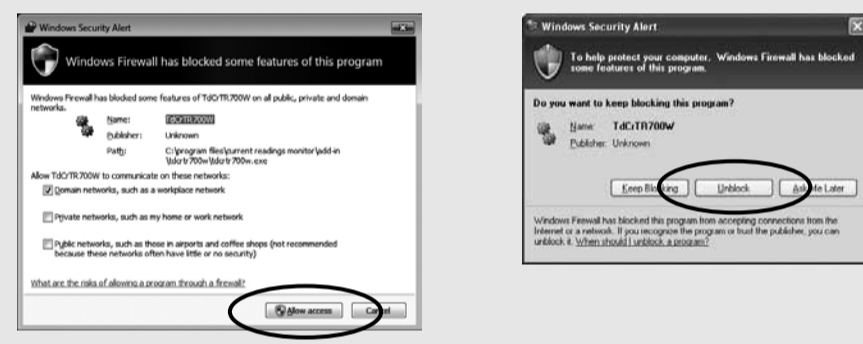


3. In a few seconds, the device set in the **Before Using the Device** will appear in the address list.

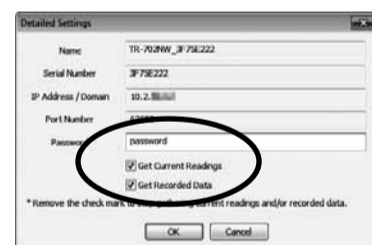


The TR-700W Series devices need to be connected to the same network. If your device does not appear in the address list, see [Operation Guide] - [Troubleshooting] - [Q&A about Settings].

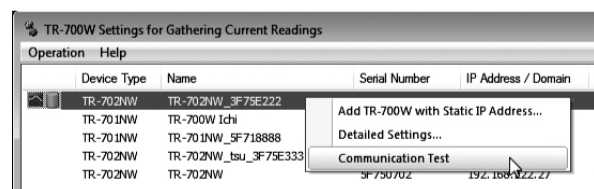
If the [Windows Security Alert] window pops up: Select either [Permit Access] or [Unblock].



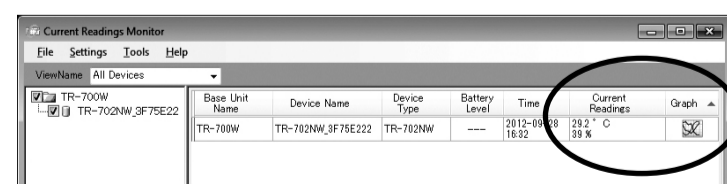
4. Double click on the target device to open the [Detailed Settings] window.
5. Check [Get Current Readings] and enter the LAN password set in the **Before Using the Device**. After entering, confirm with the [OK] button. The default password is "password". You can change the password in the **Before Using the Device**.



6. Right click on the target TR-700W Series device and select [Communication Test]. Check the communication status.



7. The current readings of the selected device will appear in the [Current Readings Monitor] window.



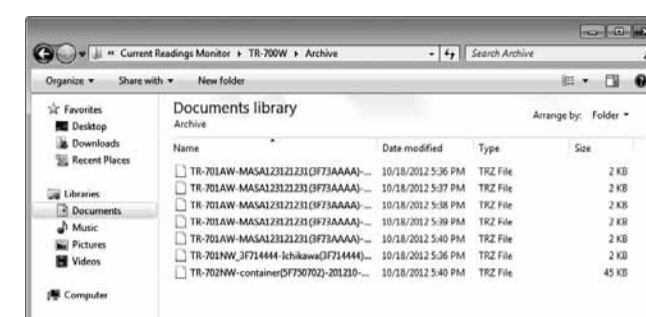
- When using the software for the first time, it will take up to one minute or so to display the current readings.
- The interval for uploading current readings into the graph can be changed from the [Basic Operation Settings] tab in the [Web Viewer Settings] menu.

## Downloading Recorded Data to a PC

When the following conditions are met, the recorded data will be downloaded and stored automatically in the folder as shown below.

- A check has been placed next to the "Get Recorded Data" option in the [Settings for Gathering Current Readings] menu of the Current Readings Monitor.
- The Current Readings Monitor is running.
- A recording session is in progress.

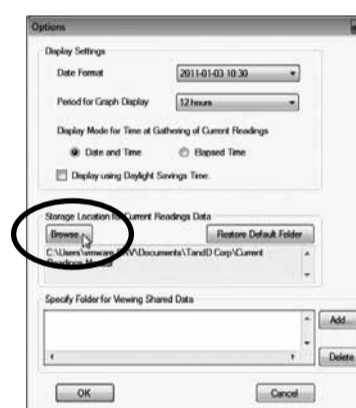
The Default Destination Folder for Recorded Data: "Documents (or My Documents)\TandD Corp\Current Readings Monitor\TR-700W\Archive".



- A file will be created for each month and updated at the recording interval. (If the recording interval is less than one minute, the data file will be updated every minute.)
- The recorded data for the period when the Current Readings Monitor was not running will automatically be downloaded at the next start up of the application. Note, if the recording interval setting is short, there may be data which has been overwritten and can no longer be downloaded.
- It is also possible to automatically send recorded data without running a computer. For details, see [Operation Guide] - [Useful Functions].

## How to Change the Default Destination Folder for Recorded Data:

1. Start the Current Readings Monitor, and select [Settings] - [Options].
2. Click on the [Browse] button and assign a new storage location for data files. After having completed all the entries, click the [OK] button.



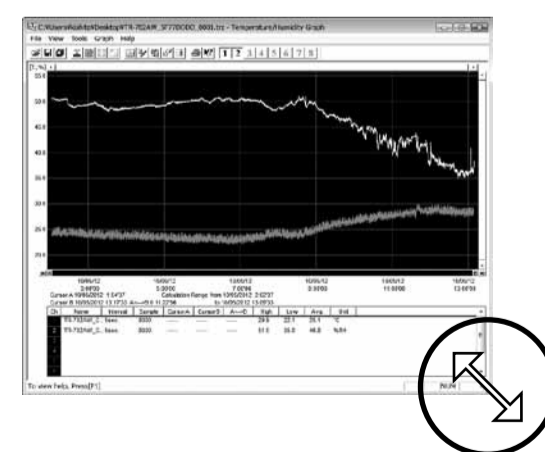
## Viewing Recorded Data in a Graph

### Opening Recorded Data

1. Double click on the desired recorded data file.
2. Temperature/Humidity Graph will open with the selected data in graph form.

### Printing Recorded Data

1. Open recorded data in graph form.
2. Make any desired adjustments to the window size and aspect ratio to be reflected in the printed graph.



3. In the [File] menu, select [Graph Print Preview]. Check the preview image of the printed page. If necessary, go back to step 2 and change the aspect ratio again.
4. To start printing, select [Print].

## Tips How to Install the USB Driver

If you are using Windows XP, the "Found New Hardware Wizard" window will automatically open when a USB device is connected. Please follow the directions to install the USB driver.

1. Select "No, not this time".

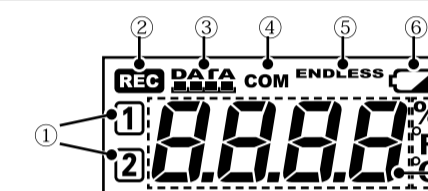


2. Select "Install the software automatically (Recommended)".



3. When the completion message appears, please click the [Finish] button.

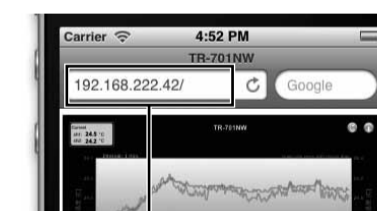
## Tips About the LCD Display



① Channel	Shows the channel number of the measurement being displayed.
② [REC] Mark	Shows the recording status. ON : Recording in progress, BLINKING : Waiting for programmed start, OFF : Recording stopped
③ Data Capacity Scale	At the beginning of every 2,000 readings the scale will be marked from left to right.
④ [COM] Mark	This appears when the device is in communication via USB or network.
⑤ Recording Mode	TR-700W Series devices are designed with only Endless Mode (Overwrite oldest data when capacity is full).
⑥ Power Warning Mark	Shows that the device is running on the backup battery only (such as when the AC adaptor cannot be used due to a power outage).
⑦ Unit of Measurement	Shows the unit of measurement.
⑧ Measurement Area	Shows the current readings. This area is also used to display messages about the status of the device.

## Tips About DHCP

When using DHCP (the automatic assignment of IP addresses), the IP address assigned to a device may change. When monitoring current readings chiefly by web browser, we recommend setting a static IP address for the device.



An IP address for the device to be monitored is necessary.

## Troubleshooting and Detailed Info

**Getting Started Guide (pdf):**  
This document is available in PDF file format.

**Operation Guide:**  
This contains detailed operations not in this manual, including easy-to-understand descriptions with screenshots and/or illustrations, as well as frequently asked questions (FAQ's).

**Update Information:**  
Information about software and firmware updates can be found here.

**How can I get product support?**  
All product support is handled directly by our distributors. Please contact the distributor from which you purchased the product.  
T&D Authorized Sales Distributors  
[http://www.tandd.com/about\\_tandd/contactus/north\\_america.html](http://www.tandd.com/about_tandd/contactus/north_america.html)